

SMARTELEC

Communication + LED Indication



INDEX	Section
General Information -----	1
Tools Required -----	2
Instructions -----	3

WARNINGS

- 1 This appliance must only be installed by a competent person in accordance with the requirements of the Codes of Practice or the rules in force.
- 2 All external wiring **MUST** comply with the current IEE wiring regulations.
- 3 Warning this appliance must be earthed.

1. General Information.

Introduction

This bulletin describes the checking procedures to use should the fault code 'a1' appear on the SmartElec program panel display. This fault code denotes **communication fault**, and can appear either on the network or pre-network versions of the SmartElec. It also describes the location and function of the three LED indicators located on the base unit.

The network program panels can be identified with serial numbers **7121030** onwards. The network base units can be identified with serial

The SmartElec consists of a base unit, (installed within the air curtain), and a program panel that can be installed remote from the air curtain. Usually, the program panel is mounted at a low level from the air curtain for user access, and up to a maximum distance of 50m. The base unit and program panel are linked by low voltage 4 core screened cable. (See fig 1).

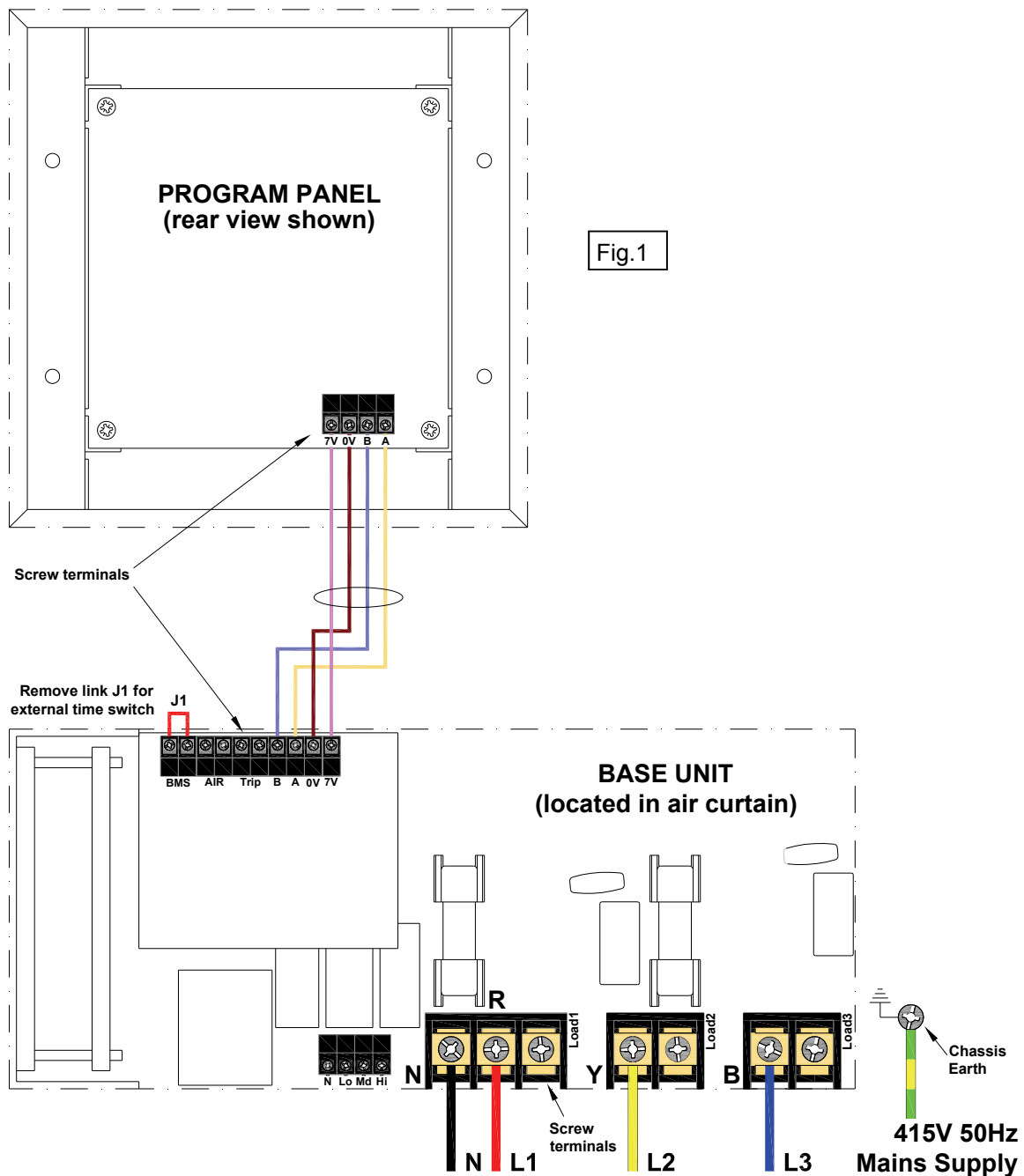


Fig.1

2. Tools required.

1: Terminal screwdriver



2: 2.5mm Allen key



3: Multimeter



4: Crosspoint screwdriver



5: Wire strippers



3. Instructions.

Prior to commencing work, isolate electrical power to the air curtain, then remove the covers from the program panel and the air curtain.

There are five basic checks to perform should 'a1' appear on the program panel display. These are as follows:

1: Polarity: Use a multimeter to check correct polarity between all 4 cores i.e. that 0v goes to 0v, 7v goes to 7v, A to A, and B to B.

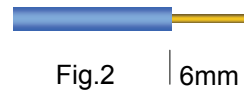
2: Continuity: Use a multimeter to check continuity between each end of all four cores.

3: Short circuit: Use a multimeter to check that there are no short circuits between any of the the four cores.

N.B. This test should be done with both ends of the cable disconnected to avoid false readings.

4: Plugs:

a) Check that the correct length of insulation has been stripped from each core. (see Fig.2 below).



b) Check the tightness of the cables in the plugs.

c) Check that the plugs are fitted to the correct circuit board pins.

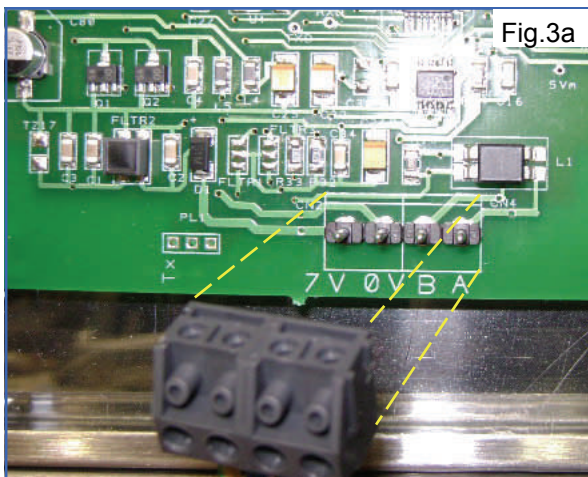
d) Check that the plugs are firmly seated on the circuit board pins in both the program panel and on the base unit.

(See figs 3a-3b below, and 4a-4b overleaf).

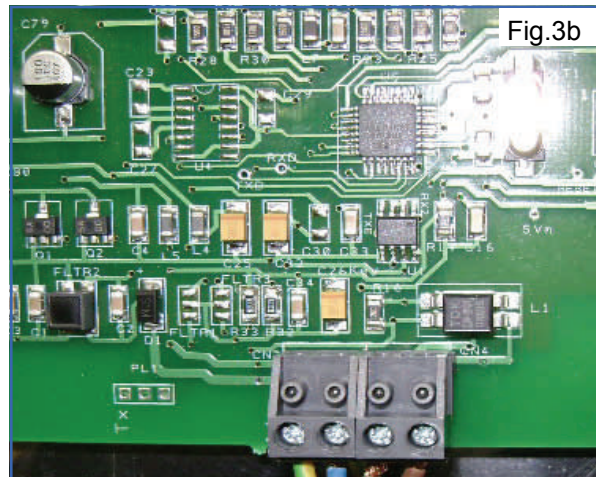
e) Check for continuity between the plug terminal screw and the pcb pin with the plug in place, (accessible through plug moulding).

5: Addressing: (Network versions only). If two or more air curtains are networked, check that each base unit has a unique address as described in the SmartElec manual (Ambirad document ref. GB/AIR/001/0108).

Program panel plug shown removed:



Program panel plug shown fitted:



Instructions cont.

Base unit plug shown removed:

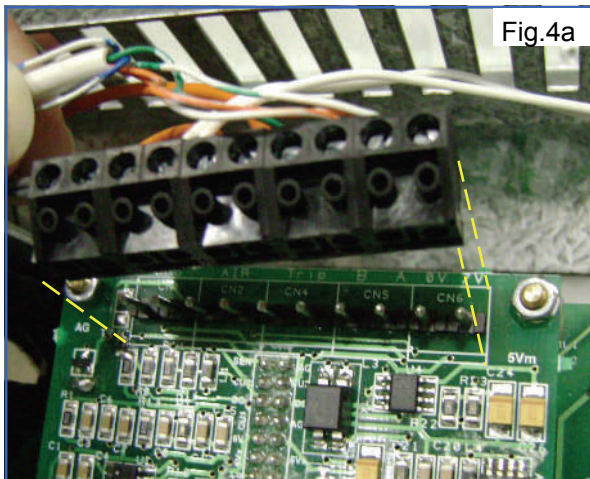


Fig.4a

Base unit LED indicator location/function:

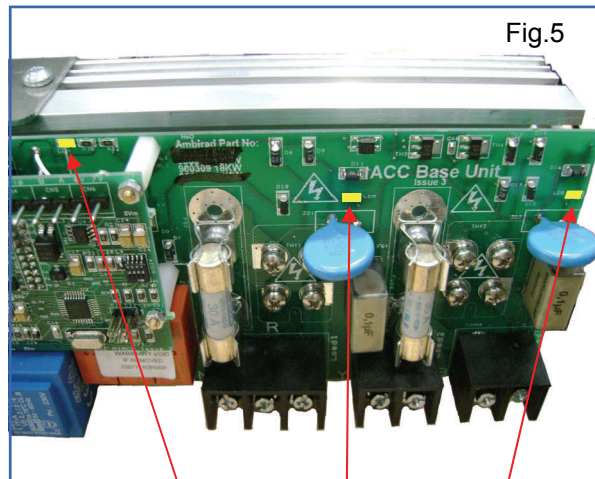


Fig.5

Base unit plug shown fitted:

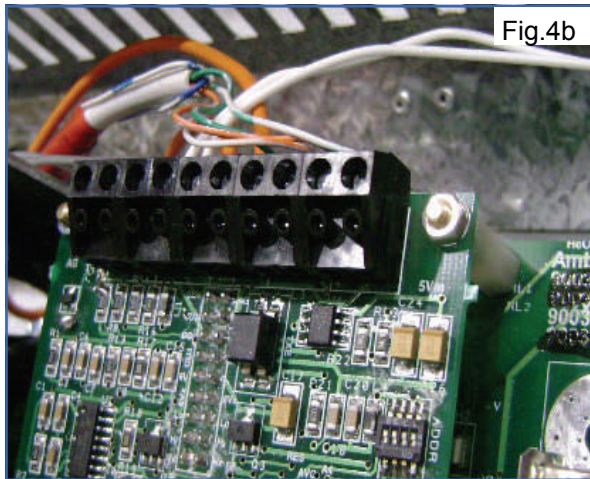


Fig.4b

No heat fan on or off	<input type="checkbox"/>	<input checked="" type="checkbox"/>	<input checked="" type="checkbox"/>
Heat on fan on	<input checked="" type="checkbox"/>	<input type="checkbox"/>	<input type="checkbox"/>
Up to temperature	<input type="checkbox"/>	<input type="checkbox"/>	<input type="checkbox"/>

Key

<input type="checkbox"/>	= OFF
<input checked="" type="checkbox"/>	= ON
<input type="checkbox"/>	= PULSING

NOTE:

In the event that the checks described in this bulletin fail to resolve the problem, please contact Ambirad Technical Support on 01384 489736 or 01384 489766, or visit our Support Information Database at the web address shown at the foot of this page.

An Ambirad Group brand



Ambirad Limited Fens Pool Avenue
Brierley Hill West Midlands DY5 1QA
United Kingdom.



Telephone 01384 489700
Facsimile 01384 489707
Email marketing@airbloc.co.uk
Website www.airbloc.co.uk
Technical Support www.s-i-d.co.uk



Airbloc is a registered trademark of Ambirad Limited. Because of continuous product innovation, Ambirad reserve the right to change product specification without due notice.