

IDFBDX AIR HEATER DOOR/CABINET EARTH LINK



WARNINGS

- 1 This appliance must only be installed by a competent person in accordance with the requirements of the Codes of Practice or the rules in force.
- 2 All external wiring MUST comply with the current IEE wiring regulations.
- 3 Warning this appliance must be earthed.

General Information.

Under certain circumstances the earth continuity between the control cabinet door and the control cabinet may be intermittent. This can cause a voltage to be present on the door due to the wiring method of the step down transformers on the printed circuit boards, i.e. one leg of the secondary winding connected to earth.

This bulletin describes the method of fitting a flexible earth link cable between the control cabinet door and the control cabinet side wall on Nordair Niche IDFBDX heaters fitted with Mitsubishi FTC controllers. The serial numbers affected are shown in the table below:

Serial No.	Units
10490/1, 10490/2	2
10494/1, 10494/2	2
10506/1, 10506/2	2
10533/1, 10533/2	2
10536/1, 10536/2	2
10537/1, 10537/2	2
10538/1, 10538/2	2
10539/1,10539/2, 10539/3	3
10540/1, 10540/2	2
10546/1, 10546/2	2
Total	21

Equipment Required.

- Earthing kit: part No. **IDFBDX-EKIT** (Fig.1).
- 6mm drill bit.
- Electric drill.
- Screwdriver.
- 6mm spanner
- Multimeter.

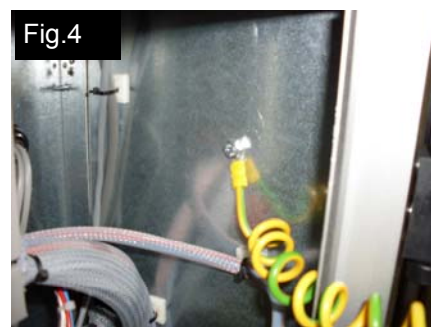
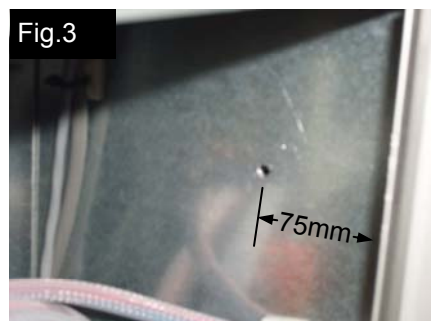
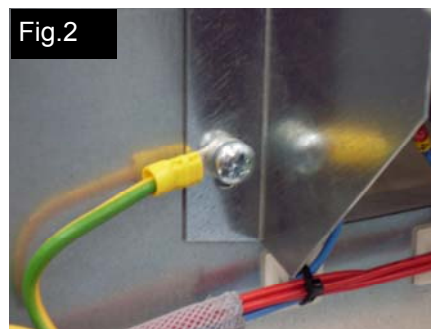
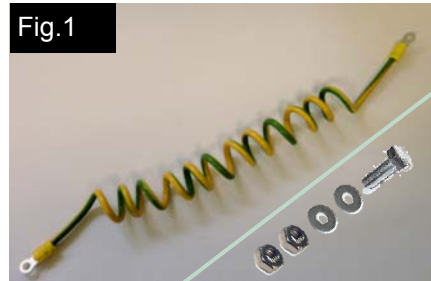
Secure the first crimp lug under the existing control lamp cover fixing screw as shown in Fig.2.

Mark and drill 1 x 6mm hole in the side wall of the control cabinet as shown in Fig.3 opposite.

Note: check inside the burner control cabinet (right hand cubicle) that the new hole is not too close to existing cables, conduit etc.

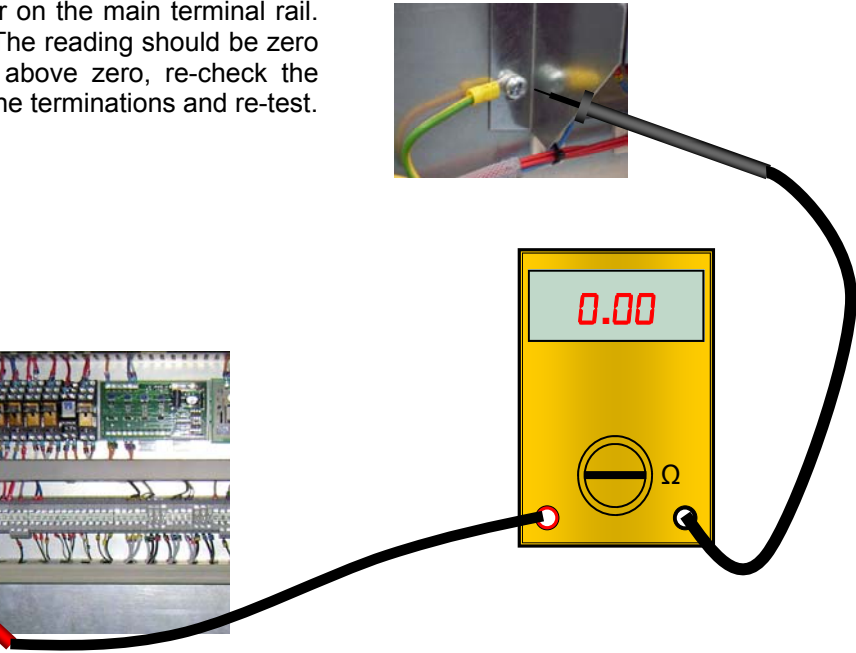
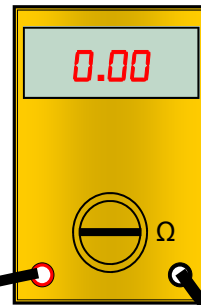
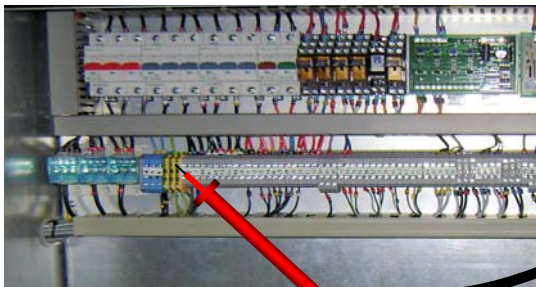
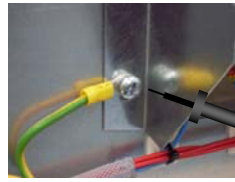
Fix the second lug using the 6mm pin, nuts and washers as shown in Fig.4.

Ensure the cabinet door can be fully opened, and that there is no undue strain on the cable.



Testing.

Using a multimeter with the lowest ohms range selected, check for continuity between the newly fitted earth ring terminal on the door and the incoming earth connector on the main terminal rail. (See illustration below). The reading should be zero ohms. If the reading is above zero, re-check the tightness/cleanliness of the terminations and re-test.





Northern Office
6 - 14 Bean Leach Road
Hazel Grove Stockport Cheshire
SK7 4LD
United Kingdom

Tel: 0161 482 7900
Fax: 0161 482 7901

Email: sales@nordairniche.co.uk

Southern Office
Unit 4 Chilford Court
Braintree Essex
CM7 2QS
United Kingdom

Tel: 01376 332200
Fax: 01376 332201

Website: www.nordairniche.co.uk



Nordair Niche is a registered trademark of AmbiRad Limited.
Because of continuous product innovation, AmbiRad reserves the right to change product specification without notice.