

# FOR THE ATTENTION OF SERVICE ENGINEERS PEKTRON 900467 TO PACTROL 2015 VISION CONTROLLER CHANGE



INDEX	Section
Introduction-----	1
Parts Requirement -----	2
Instructions -----	3

## WARNINGS

AmbiRad equipment must be installed and maintained in accordance with the relevant provisions of the Gas Safety (Installations and Use) Regulations 1998 for gas fired products. Due account should also be taken of any obligations arising from the Health and Safety at Works Act 1974 or relevant codes of practice. In addition the installation must be carried out in accordance with the current IEE wiring regulations (BS 7671), BS 6896:2005 (Industrial & Commercial) and any other relevant British Standards and Codes of Practice by a qualified installer. All external wiring MUST comply with the current IEE wiring regulations.

# 1.Introduction.

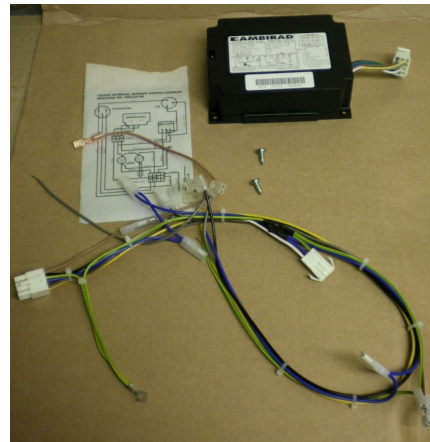
We have experienced some site issues on the Pektron 900467 controller fitted to Vision heaters. On some of the controllers, the transformer has failed, resulting in the heater being non-operational.

As a pre-caution, burners which are fitted with the Pektron 900467 controller and experience a fault will be replaced with the Pactrol 2015 controller.

# 2. Parts Requirement.

## 2015-KIT Contents

1 x 2015	Pactrol Control
1 x 900224	Wiring Harness
1 x 900224-WD	Wiring Diagram
2 x 201092	Spare Screws

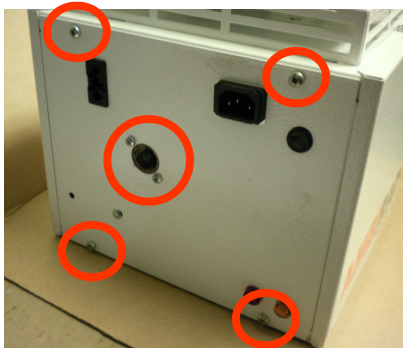


# 3. Instructions.

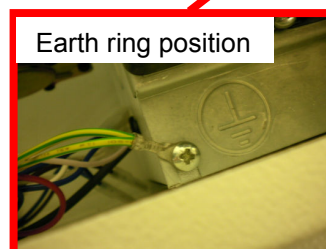
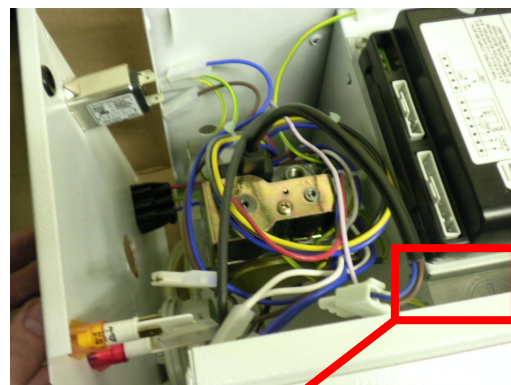
## Notes

**Before carrying out any work on the burner, ensure all the relevant safety points have been isolated, such as the gas and electrical supply.**

**You will need to change the complete wiring harness, so it may be easier to remove the back plate to gain access to the appropriate connections.**



- 1) Open the side door (controller side) to gain access to the Pektron control.
  - Disconnect the connections from the Pektron and remove the Earth Ring Screw (retain the screw for later).
  - Disconnect the valve plug from the harness
  - Disconnect the neons and mains filter.



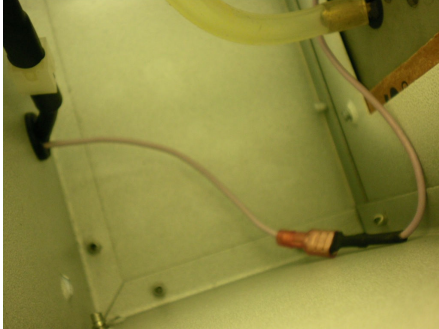
### 3. Instructions - Continued.

2) Next, disconnect the connections from the fan plug and pressure switch.

Disconnect the flame cable (pink) from inside the combustion chamber and pull it through the grommet.

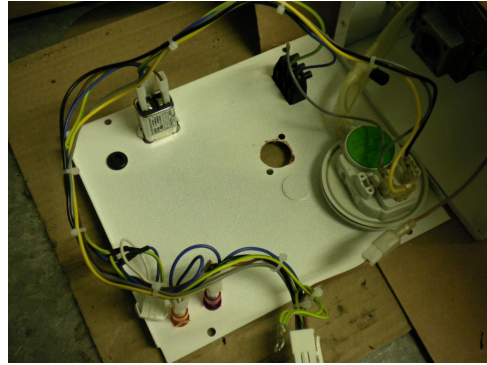
**Note you will need to remove the inlet grille to gain access to this.**

You should now have the Pektron harness free to remove. Remove the harness.



5) Re-fit the connections with the supplied 900224 harness.

- Connect the flame cable and replace the inlet grille.
- Connect the neons, mains filter, fan plug and pressure switch.



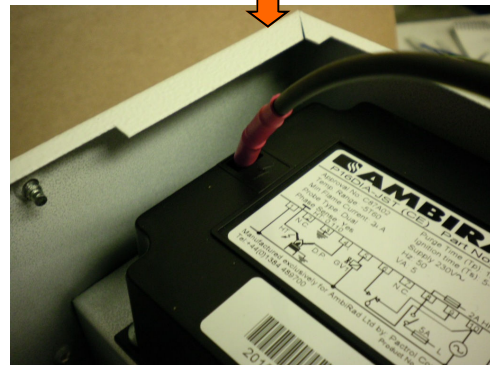
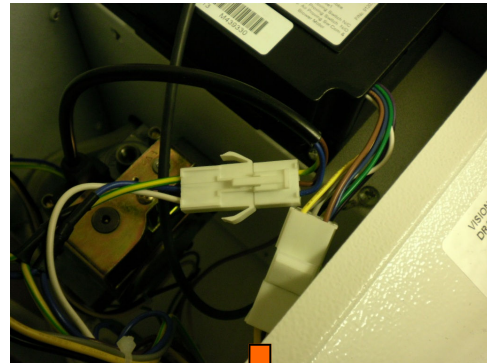
3) Remove the screw from the bracket which is holding the Pektron control (retain screw for later).

This can now be removed.



6) Connect the Pactrol, valve plug and earth ring.

Connect the HT lead to the Pactrol.



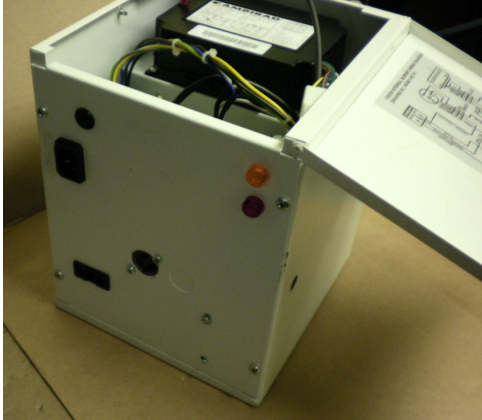
4) Now fit the 2015 Pactrol control into position, using the 2 screws retained or provided in the kit.



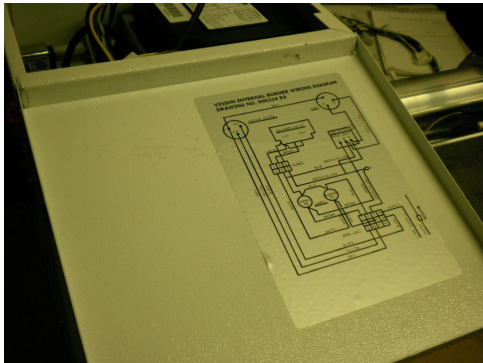


### 3. Instructions - Continued.

7) Re-fit the back panel (if removed) using the retained screws.



8) Finally, replace the wiring diagram on the door with the one supplied 900224-WD.



**Please note: any Pektron controls which are replaced need to be returned to AmbiRad for review, with any information regarding the model it was removed from and fault description.**

An AmbiRad Group brand



AmbiRad Limited Fens Pool Avenue  
Brierley Hill West Midlands DY5 1QA  
United Kingdom.

Telephone 01384 489700

Facsimile 01384 489707

Email [info@ambirad.co.uk](mailto:info@ambirad.co.uk)

Website [www.ambirad.co.uk](http://www.ambirad.co.uk)

Technical Support [www.s-i-d.co.uk](http://www.s-i-d.co.uk)

**AMBI RAD**  
ENERGY EFFICIENT HEATING SYSTEMS

AmbiRad is a registered trademark of AmbiRad Limited. Because of continuous product innovation, AmbiRad reserve the right to change product specification without due notice