

Technical Bulletin.

GAS FIRED AB175 & AB225 COMBUSTION FAN/AIR INTAKE RETROFIT



INDEX

Section

General information -----	1
Tools required -----	2
Parts required -----	3
Removal & replacement -----	4



WARNINGS

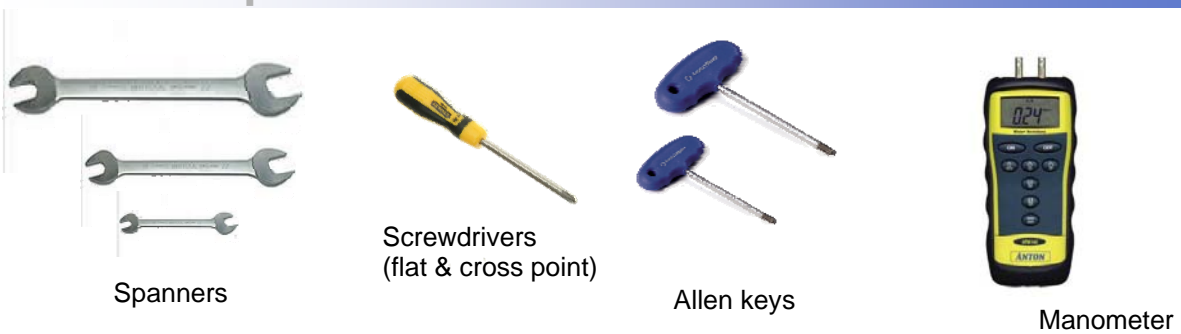
- 1 This appliance must only be installed by a competent person in accordance with the requirements of the Codes of Practice or the rules in force.
- 2 All external wiring MUST comply with the current IEE wiring regulations.
- 3 Warning this appliance must be earthed.

1. General Information

This bulletin describes how to carry out the following on the AB225 and AB175 gas fired air curtains.

- ◆ Remove the existing combustion fan and air inlet box.
- ◆ Fit the new combustion fan c/w damper and air inlet terminal.
- ◆ Fit the positive side of the air pressure switch to the air inlet impulse stud.
- ◆ Fit test point in air pressure switch vacuum tube.
- ◆ Fit the burner air restriction plate.
- ◆ Re-commission the unit.

2. Tools Required










3. Parts Required








Two kits containing all the necessary parts are available:

Kit 1: Part No. **AB225-FAN-KIT**

Kit 2: Part No. **AB175-FAN-KIT**

ITEM	PART NUMBER	ITEM	PART NUMBER
 Ducted air assembly	111930	 Damper assembly	202308
 Fan support elbow	111916	 Fan	202267
 Fan support elbow gasket	111933	 Terminal	6050712300 (Rez)
 Fan outlet	111918	 Orifice plate	114388 (225) 114389 (175)

3. Parts Required cont.

ITEM	PART NUMBER	ITEM	PART NUMBER
 Burner air restriction plate	144441	 Silicone tube	2218
 3 pin plug	3124	 Tee piece	L104200
 Clip for impulse stud	C110709	 Tee piece cap	L104201
 Impulse stud	2267-5		

4. Removal & Replacement

! Isolate main gas and electricity supplies before commencing any work on this unit.

Remove the silicone vacuum tube from the spigot as shown.

Remove fan

Remove the main flue outlet from the combustion fan, then disconnect the three pin plug as shown.

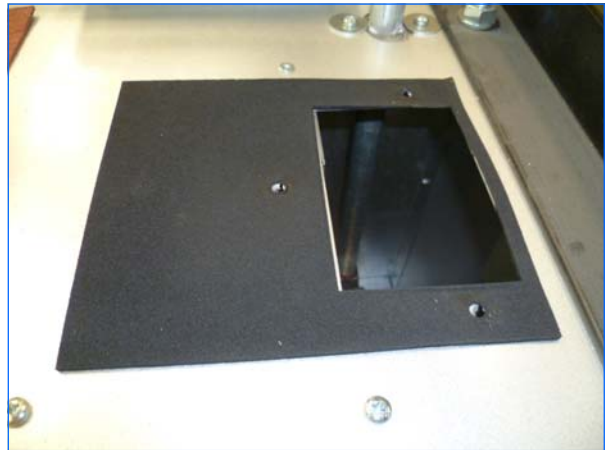


4. Removal & Replacement cont.

Remove the four screws securing the fan support bracket, then remove fan. (Retain screws for future use).



Foam gasket in position.



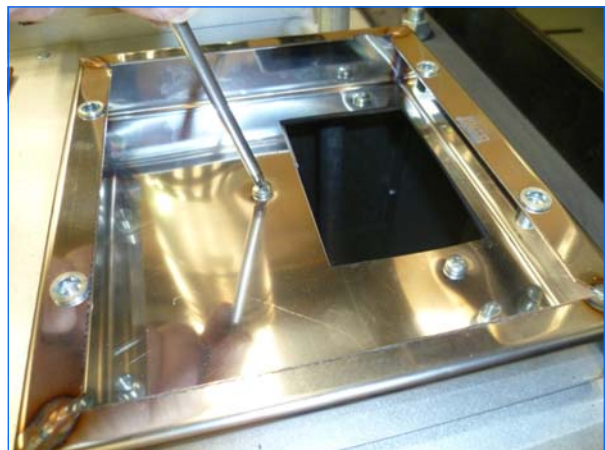
Remove air inlet box

Remove the four air inlet box lid screws then remove lid.



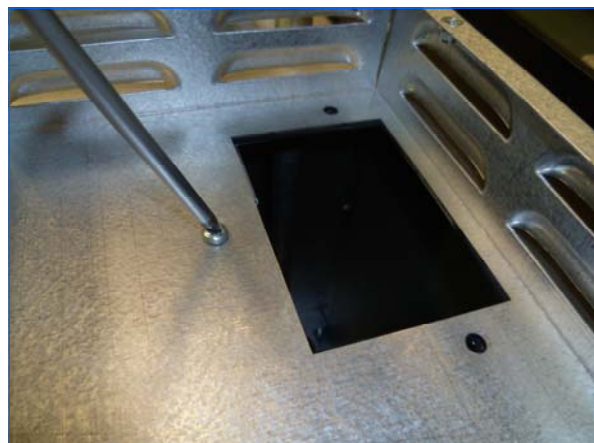
Fit new air inlet box and terminal

Fix new air inlet box in position using the three original fixing screws.



Remove the three air inlet box retaining screws, (retain for future use) then remove box taking care not to damage the foam gasket. (See next photo).

Fit new air inlet spigot using the four screws and washers provided.



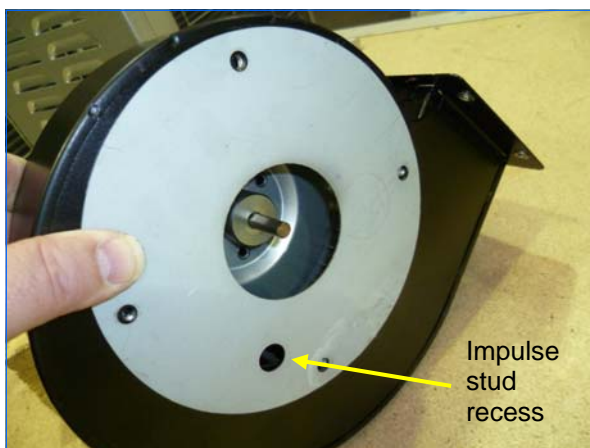
4. Removal & Replacement cont.

Fit air inlet terminal as shown (push fit).



Assemble new fan

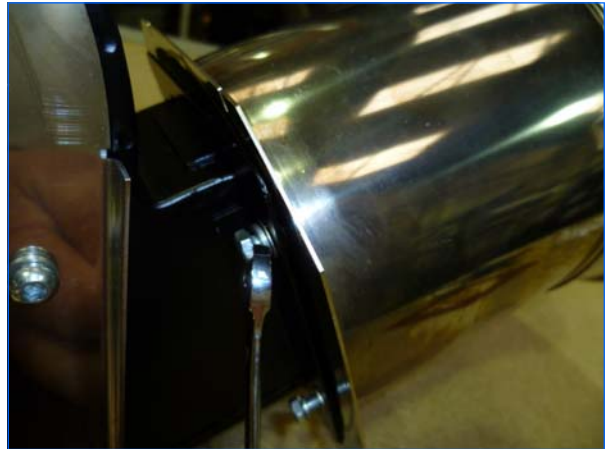
Ensure that air orifice plate is correctly positioned on fan housing with impulse stud hole in position shown.



Fit fan support bracket to fan housing using the four dome head Allen pins/washers supplied.



Fit the fan outlet to the fan using four set pins/washers as shown.
The new fan assembly is now complete.



Fit the new fan assembly and red gasket to the air curtain using the four existing screws. Refit the vacuum tube, then connect the 3 pin plug for the power supply.

Fit new damper assembly

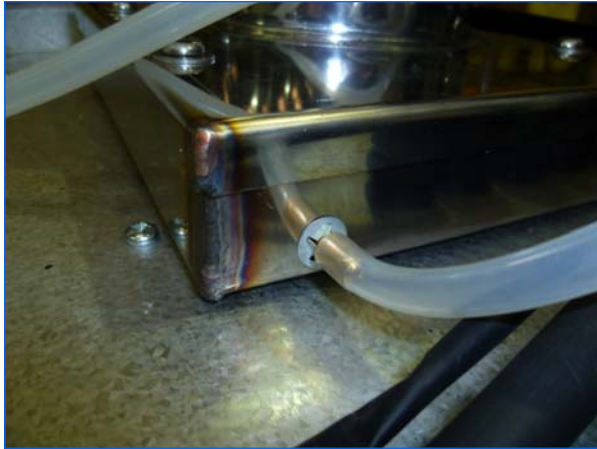
Fit damper assembly to fan outlet as shown, (push fit).
Photo for illustration purposes only, position may vary depending on individual installation.



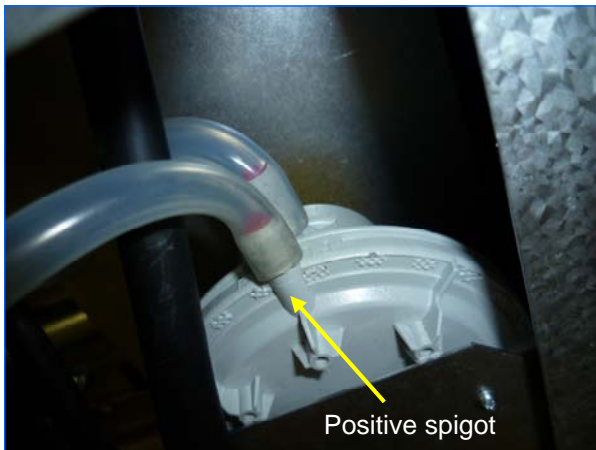
4. Removal & Replacement cont.

Fit new pressure switch tubing

Fit new silicone tubing to air inlet box stud as shown.



Feed the tubing through the gland on top of the burner housing, cut to length, then fit to the air pressure switch positive spigot as shown.



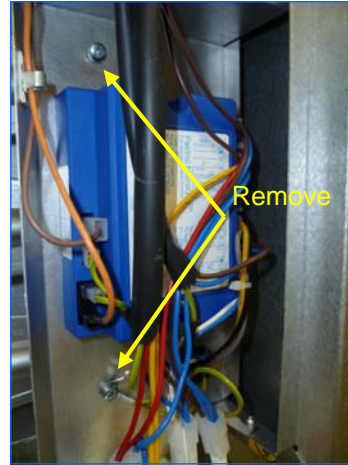
Fit new test point

Cut the vacuum tube midway between the fan vacuum spigot and burner housing. Fit new tee piece c/w rubber cap as shown.



Fit burner air restriction plate

Remove the two screws above and below the sequence controller within the burner housing (arrowed).



Slide the new burner air restriction plate behind the sequence controller bracket as shown, ensuring that the holes in the plate line up with the screw holes.

Refit screws and tighten.



Commissioning

Remove the cap from the tee piece test point and connect a manometer. Adjust flue damper to achieve the settings shown in the table below:

Vacuum setting (mbar)	AB225	AB175
Cold	4.7	4.7
Hot	2.8	2.8



AmbiRad Limited Fens Pool Avenue
 Brierley Hill West Midlands DY5 1QA
 United Kingdom.

Telephone 01384 489700
 Facsimile 01384 489707
 Email marketing@airbloc.co.uk
 Website www.airbloc.co.uk
 Technical Support www.s-i-d.co.uk

 An AmbiRad Group brand



Airbloc is a registered trademark of AmbiRad Limited. Because of continuous product innovation, AmbiRad reserve the right to change product specification without due notice.