

VISION RANGE WHITE RODGERS TO HONEYWELL VK SERIES GAS VALVE REPLACEMENT



INDEX

Section

General Information-----	1
Parts Requirement -----	2
Instructions -----	3
Adjustment -----	4

WARNINGS

AmbiRad equipment must be installed and maintained in accordance with the relevant provisions of the Gas Safety (Installations and Use) Regulations 1998 for gas fired products. Due account should also be taken of any obligations arising from the Health and Safety at Works Act 1974 or relevant codes of practice. In addition the installation must be carried out in accordance with the current IEE wiring regulations (BS 7671), BS 6896:2005 (Industrial & Commercial) and any other relevant British Standards and Codes of Practice by a qualified installer. All external wiring MUST comply with the current IEE wiring regulations.

1. General Information.

This bulletin describes the procedures to be carried out when replacing White Rodgers gas valves fitted to Vision burners. see fig.1.

The replacement gas valve is a Honeywell VK4105C(A), see fig 2 - AmbiRad part No. 202658 (Natural gas), and 202657 (Propane), which will be supplied as a a kit of parts with a mini harness fig 3 - part no. 900571; gas valve

spacer fig 4 - part no. 200651; and 2 off M4 x 10 pozi pan screws fig 5 - part No. 5314.

Kit part numbers **202748** for Natural Gas valve replacements and **202749** for Propane Gas valves.

No additional gas pipe fittings are required to change this gas valve.



Fig.1

White Rodgers 36J
AmbiRad no. 202404 (Natural Gas)
AmbiRad No. 202528 (Propane)



Fig.2

Honeywell VK4105C(A)
AmbiRad No. 202658 (Natural Gas)
AmbiRad No. 202657 (Propane)

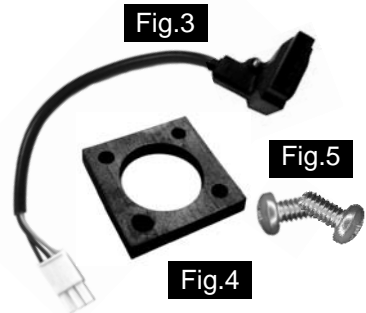



Fig.3


Fig.5

Fig.4

Honeywell valve lead
AmbiRad No. 900571
Valve Spacer
AmbiRad No. 202651
Screws
AmbiRad No. 5314

 Only Vision burners currently fitted with White Rogers gas valves part Nos. 202404 and 202528 with generation code 'AA' can be replaced with the new Honeywell gas valves.

A kit of parts has been created for replacement spares. This kit will take form of the valve, mini valve harness, rubber spacer and two off M4 x 10 Screws. Part numbers shown in chart below.

 Note Any spare part components that are not approved by AmbiRad could invalidate the approval of the appliance and validity of the warranty.

Original

Replacement



202404
White Rodgers 36J42K-201
Nat Gas Valve 220/240V




202748
Honeywell VK4105C Kit
Nat Gas Valve 220/240V



202528
White Rodgers 36J41K-200
Propane Valve 220/240V



202749
Honeywell VK4105A Kit
Propane Valve 220/240V

 Note: Vision burners currently fitted with SIT 840 Sigma Gas Valves part Nos. 201857 and 201914 can **NOT** be replaced with the new Honeywell gas valve.

SIT valves will be made available as spares.

2. Tools and Parts Requirement.

Gas valve, mini harness, gas valve spacer and screws are supplied together as a kit of parts.

being replaced, the following tools and equipment may be required:

In addition and depending on which valve is



Pozi screwdrivers



Stilsons




Jointing compound



Kit of parts:
202748 or 202749

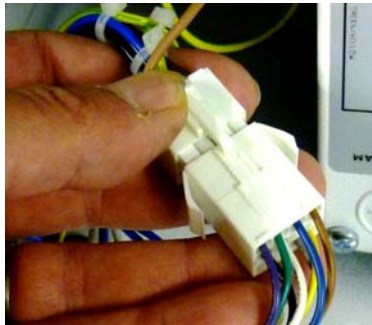
3. Instructions.

Valve replacement.

 **Ensure that both the gas and electricity supplies are isolated from the burner.**

Step 1: Remove the burner assembly from the tube heater.

Step 2: Open the right hand access door and detach the burner controller from the wiring harness.



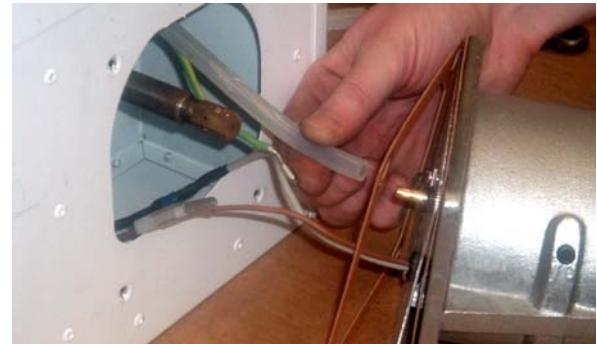
Step 3: Open the left hand access door and detach the impulse hoses from the air pressure switch.



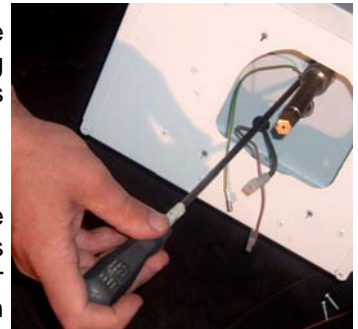
Step 4: Remove the 4 screws holding the burner head onto the burner assembly.



Step 5: The burner head can now be detached by disconnecting the impulse tube and the burner head wiring.



Step 6: Detach the two screws holding the front of the gas valve.



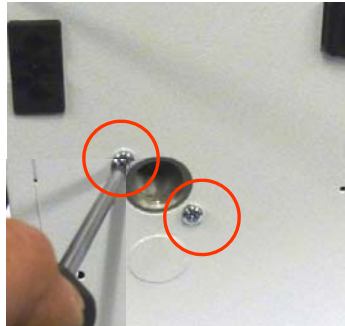
Step 7: Remove the four screws holding the rear burner plate in position.



Step 8: Remove the rear plate.

Step 9: The jet carrier, gas inlet, and wiring harness can now be detached from the gas valve.

Step 10: The two screws retaining the gas valve to the rear plate can now be removed.



Step 11: The gas valve can now be replaced.

Step 12: Ensure the self adhesive rubber spacer is located between the valve input flange and the inside of the back plate prior to fixing. (Sticky side on valve flange).



Step 13: Complete the refit of all components in reverse order.

Step 14 Set gas pressures to data badge and test to ensure reliable burner performance.

Step 15 Test product and close access doors.

4. Adjustment of Honeywell Gas Valve

Adjustment screw under cap to set injector pressure

Injector pressure test point.



Gas inlet test point.

AMBIRAD
HEATING AND VENTILATION SOLUTIONS

AMBIRAD AIRBLOC NORDAIRNICHE BENSON

Technical Support:

Tel: 01384 489 200

Fax: 01384 489 707

ambiradsales@nordyne.com
www.ambiradgroup.co.uk