

Unit Heaters

UEAS

Gas-Fired, Super High Efficiency, Separated Combustion, Low Static, 4 sizes, 131,000 - 305,000 BTUH Input

- Up to 93% thermal efficient
- 50-60°F temperature rise range
- Natural gas (propane conversion kit included)
- TCore³® 409 stainless steel primary heat exchanger with extruded aluminum MacroChannel secondary heat exchanger (patent pending)



UDAS

Gas-Fired, Separated Combustion, Low Static, 14 sizes, 30,000 - 400,000 BTUH Input

- Sizes 30-400 certified for commercial/industrial heating application
- Sizes 30-125 carry additional approval for residential garage/workshop heating applications
- 82-83% thermal efficient, 50-60°F rise range
- TCore²® titanium stabilized aluminized steel heat exchanger



UDAP

Gas-Fired, Power Vented, Low Static Axial Fan, 14 sizes, 30,000 - 400,000 BTUH Input

- Sizes 30-400 certified for commercial/industrial heating application
- Sizes 30-125 carry additional approval for residential garage/workshop heating applications
- 82-83% thermal efficient, 50-60°F rise range
- TCore² titanium stabilized aluminized steel heat exchanger



UDBS

Gas-Fired, Separated Combustion, High Static Blower, 14 sizes, 30,000 - 400,000 BTUH Input

- 82-83% Thermal efficient
- 45-75°F Rise range - Sizes 30-350
- 50-80°F Rise range - Size 400
- TCore² titanium stabilized aluminized steel heat exchanger
- Patented single burner combustion system



UDBP

Gas-Fired, Power Vented, High Static Blower, 14 sizes, 30,000 - 400,000 BTUH Input

- 82-83% Thermal efficient
- 45-75°F Rise range - Sizes 30-350
- 50-80°F Rise range - Size 400
- TCore² titanium stabilized aluminized steel heat exchanger
- Patented single burner combustion system



Unit Heaters

F

Gas-Fired, Gravity-Vented, Fan-Type, 25,000 - 400,000 BTUH Input

- Orifices for natural gas
- Aluminized steel heat exchanger
- Aluminized steel burner rack with stainless steel insert
- Spark ignited, intermittent safety pilot with electronic flame supervision
- Single-stage combination gas valve (field adjustable for high altitude operation)



B

Gas-Fired, Gravity-Vented, Blower-Type, 25,000 - 400,000 BTUH Input

- Orifices for natural gas
- Aluminized steel heat exchanger
- Aluminized steel burner rack with stainless steel insert
- Spark ignited, intermittent safety pilot with electronic flame supervision
- Single-stage combination gas valve (field adjustable for high altitude operation)



OH

Oil-Fired, Fan Type, 118,000, 173,000 and 229,000 BTUH

- 82% efficiency
- Full automatic, thermostatically controlled operation
- Low stress, 18 gauge steel heat exchanger
- Heavy, 13 gauge steel combustion chamber
- 115/1/60 supply voltage
- 24-volt control voltage



OT

Fuel Oil Tank, 250 Gallon, Single-Wall, Indoor, UL-Listed, applies to Models OH

- Designed with a work bench top that allows the tank to be used as a work area
- Large (12-1/2 sq. ft.) work surface with 2" side and rear
- Retainer lips and 3" legs for "toe space"



WS

Indoor, Suspended, Steam or Hot Water Hydronic, 13,000 - 350,000 BTUH Input, Air Volume 270 - 4,750 CFM

- Heat exchanger composed of steel tubes and aluminum fins spaced approximately 10-1/2 fins per inch
- Painted tubing heat exchanger and aluminum fins
- Hot water applications
- Fan/motor assembly includes galvanized fan guard
- Vertical or horizontal configuration



Large Capacity Unit Heaters

LDAP

Indirect Fired, Indoor, Downflow, Packaged Heater, 400 MBH, 800 MBH and 1200 MBH

- 83% thermal efficient
- 55°F temperature rise range
- Patented combustion system
- Titanium stabilized aluminized steel heat exchangers
- 208 or 230 single phase supply voltage



Duct Furnaces/Gas Heating

HRPD

Outdoor, Power-Vented, Dual, Eight Sizes Available, 250,000 - 800,000 BTUH Input

- Available for natural and LP gas
- Integral power vent system provides metered combustion air, dilutes flue products and eliminates the need for vent caps
- Thermocore aluminized steel heat exchanger with venturi-design tubes
- 80% thermal efficiency
- Aluminized steel heat exchangers (when inlet air temperature is below 40°F or temperature rise is less than 40°F, optional stainless steel heat exchanger is recommended)
- Aluminized steel burners with stainless steel insert
- 120-volt supply voltage



Duct Furnaces/Gas Heating

EEDU

Energy Efficient Indoor, Power-Vented, Gas-Fired, 75,000 - 400,000 BTUH Input

- Available for natural and LP gas
- Thermocore® aluminized steel heat exchanger with venturi-design tubes
- Intermittent spark pilot
- Single-stage 24-volt gas valve
- Aluminized steel heat exchanger
- Aluminized steel burners with stainless steel insert
- 120-volt supply voltage
- Factory-installed power venter



RP

Rooftop, Gas-Fired, Power-Vented, 125,000 - 400,000 BTUH Input

- Available for natural and LP gas
- Integral power vent system provides metered combustion air, dilutes flue products and eliminates the need for vent caps
- 80% thermal efficiency
- Thermocore aluminized steel heat exchanger with venturi-design tubes
- Aluminized steel heat exchanger (When inlet air temperature is below 40°F or temperature rise is less than 40°F, optional stainless steel heat exchanger is recommended)
- Aluminized steel burners with stainless steel insert
- 120-volt supply voltage



SC

Indoor, Separated Combustion, Gas-Fired, 100,000 - 400,000 BTUH Input

- Available for natural and LP gas
- 80% thermal efficient
- Intermittent spark pilot
- Single-stage 24-volt gas valve
- Aluminized steel heat exchanger
- Aluminized burners with a stainless steel insert
- 115 volt supply voltage
- 115 volt venter motor with stainless steel shaft
- 24 volt control voltage transformer



Gas Radiant Heaters

RIHN, RIHVN, RIHL & RIHVL

Indoor, Gas-Fired, High Intensity, Infrared, 30,000 - 200,000 BTUH Input for Natural Gas, 50,000 - 120,000 BTUH Input for Propane

- 115 volt operation for single-stage models, 24 volt operation for 2-stage models
- Direct spark ignition, 100% safety shut-off
- Solenoid gas valve, 1/2" NPT inlet
- Ceramic combustion surface temperature up to 1850°F, capable of reaching full intensity temperature in less than 30 seconds
- Seamless aluminized steel plenum chamber with stainless steel ceramic tile retainer clips
- Venturi mixer of spun metal construction for precision metering of air/gas mixture
- Highly polished aluminum reflector
- Balanced suspension holes, 3/8" diameter



X

Indoor, Gas-Fired, Gravity-Vented, 75,000 - 400,000 BTUH Input

- Available for natural and LP gas
- 80% thermal efficiency
- Intermittent spark pilot
- Single-stage 24-volt gas valve
- Aluminized steel heat exchanger
- Aluminized steel burners with stainless steel insert
- 120-volt supply voltage

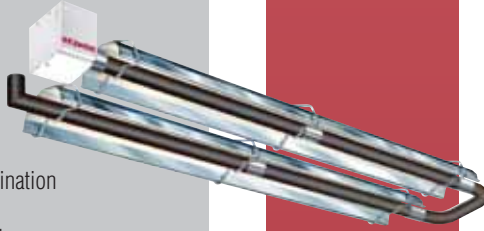


Gas Radiant Heaters

VPS

Indoor, Gas-Fired, Tubular Radiant, Low Intensity, 60,000 to 200,000 BTUH Input

- Available for natural and LP gas
- Full input rate for elevations up to 2,000 ft.
- 115/1/60 supply voltage
- Multi-try direct ignition with soft lockout
- Single-stage combination gas valve
- Pre-purge and post-purge



VPT

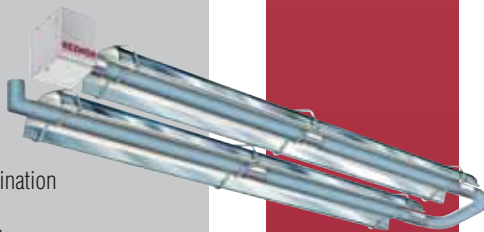
Indoor, Gas-Fired, Tubular Radiant, Low Intensity, 60,000 to 200,000 BTUH Input

- Available for natural and LP gas
- Full input rate for elevations up to 2,000 ft.
- 115/1/60 supply voltage
- Multi-try direct ignition with soft lockout
- Two-stage combination gas valve
- Pre-purge and post-purge

VCS

Indoor/Outdoor, Harsh Environment, Gas-Fired, Tubular Radiant, Low Intensity, 60,000 to 200,000 BTUH Input

- Available for natural and LP gas
- Stainless steel (300 series grade) burner box
- Full input rate for elevations up to 2,000 ft.
- 115/1/60 supply voltage
- Multi-try direct ignition with soft lockout
- Single-stage combination gas valve
- Pre-purge and post-purge



VCT

Indoor/Outdoor, Harsh Environment, Gas-Fired, Tubular Radiant, Low Intensity, 60,000 to 200,000 BTUH Input

- Available for natural and LP gas
- Stainless steel (300 series grade) burner box
- Full input rate for elevations up to 2,000 ft.
- 115/1/60 supply voltage
- Multi-try direct ignition with soft lockout
- Two-stage combination gas valve
- Pre-purge and post-purge

Destratification

AEB

Vertical, Indoor or Outdoor, Air Turnover Unit with Optional Heating, Cooling Capacity 3,000 - 150,000 CFM – 7.5 Ton to 200 Ton, Heating Capacity 200 - 6,000 MBH (Output)

- Indirect fired designed for indoor or outdoor installation where air turnover (destratification) is desired
- Hinged access doors with stainless steel piano hinges, compression latches and safety switch
- Numbered control wiring, terminal strip and component identification labels
- EEPAC high efficiency fan motor with adjustable 1.5 s.f. V-Belt drive
- Control transformer with service switch and circuit breaker
- All wiring external to control cabinet within BX cable or conduit



MAPS® Packaged Systems

RCC, RDC, RDCC, RECC, REDC, RCB, RDB, RDCB, RDOB, RECB, REDB

Cooling, Heating, Dehumidifying MUA Rooftop Systems Cool and Heat High Volumes of Outside Air, Cooling Capacity 3,600 - 12,500 CFM – 20 Tons to 60 Tons

- IQ digital controller
- 20% - 100% capacity control
- Modulated capacity scroll compressor with internal motor overload
- Fully interlaced coils
- Double wall construction standard - R9 or higher value
- Hinged access doors with handles
- Re-Heat Pump™ dedicated reheat cycle
- 2 - 4 staged control
- Optional SCR control
- 3 - 8 Stages of cooling
- 6:1 gas modulation
- Natural and propane gas
- Hot gas reheat



Dedicated Outdoor Air Systems (DOAS)

R7DA

Gas/Electric Packaged DOAS System

- Easy control section access
- Unit mounted disconnect available
- 208/230V & 460V power
- Terminal wiring connections
- Standard thermostat connection
- Single power
- 5.8 ISMRE efficiency meets standard 90.1-2016
- R410-A refrigerant
- Driers & TXV
- Lightweight all-aluminum evaporator coil
- ½ the refrigerant use
- Corrosion proof drain pan
- Overflow alarm switch available
- Patented hot gas reheat
- Low, medium & high gas heat
- 304 stainless steel heat exchanger
- High altitude & propane conversion kits
- Four corner bottom lifting connections
- Field convertible horizontal supply & return
- Panels replace vertical holes
- Enhance security burglar bars (return & supply access available)
- Economizer Title 24 complainant with filtered
- Outdoor air available (field or factory installed)
- 2 position manual & motorized outdoor air intake available (factory or field installed)
- Filtered (MERV 5) & hooded intake
- CO₂ demand control available
- Building pressurization control



ZQYRA

Hybrid IAQ Ventilator, 600 - 1,500 CFM

- Modulating direct expansion heat pump system
- Durable total enthalpy wheel (ARI Certified)
- Field convertible vertical or horizontal flanged supply/return air openings
- Outdoor intake & exhaust rain hoods
- MERV 8 filters for outside and return air streams
- Long lasting G90 painted exterior
- Full double wall insulated construction in supply air stream
- Bottom lifting lugs
- Simple user interface to setup and control unit
- Supply & return fans: electronically commutated motor (ECM) - 96% efficiency
- 10kW auxiliary heat
- SCR control of auxiliary heat
- Unit mounted display
- Corrosion-proof sloped drain pan



Dedicated Outdoor Air Systems (DOAS)

YDHA

Space Conditioning, 1,000 - 10,000 CFM
– 5 Tons to 30 Tons, Heating Capacity 75 - 600 MBH Gas Heat – 10 - 90 kW Electric Heat

- High efficiency digital scroll technology
- Exceeds ASHRAE standard 90.1 requirements
- Includes TCore³® condensing heat technology
- Fully interlaced coils
- Compressor anti-cycle programming
- Natural gas or propane furnace
- Double wall foam panel construction – R13
- Hinged access doors with slam latches
- Condensing gas heat (92%)
- Integral energy recovery
- Low ambient dehumidification operation
- Slide out: heat exchanger(s), fan & wheel



YDMA

Makeup Air Ventilation, 1,000 - 10,000 CFM
– 5 Tons to 30 Tons, Heating Capacity 75 - 800 MBH – 10 - 90 kW Electric Heat

- High efficiency digital scroll technology
- ECM condenser fans and optimized coil designs
- Exceeds ASHRAE standard 90.1 requirements
- Includes TCore³ condensing heat technology
- Fully interlaced coils
- Compressor anti-cycle programming
- Natural gas or propane furnace
- Double wall foam panel construction – R13
- Hinged access doors with slam latches
- Condensing gas heat (92%)
- Integral energy recovery
- Low ambient dehumidification operation
- Slide out: heat exchanger(s), fan & wheel



Electric Heaters

EGEB

Cyclone Commercial Unit Heater, 1 or 3-Phase

- Almond color
- Epoxy/polyester powder paint finish
- 208V, 240V, 277V, 347V, 480V, 600V
- Draw-through design for more evenly heated air
- Specially designed outlet diffuser provides maximum air velocity
- Individually adjustable louvers
- High-limit temperature control with automatic reset
- 18- and 20-gauge steel



EGHB

Industrial Suspended Unit Heater

- Almond color
- Epoxy/polyester powder paint finish
- 208V, 240V, 277V, 347V, 480V, 600V
- 1 or 3-phase, some units may be field converted from 3 to 1-phase
- 18 and 20-gauge steel
- Adjustable louvers to direct airflow
- High-limit temperature control with automatic reset



EGW

Economical Unit Heater, 240/208V, 1-Phase

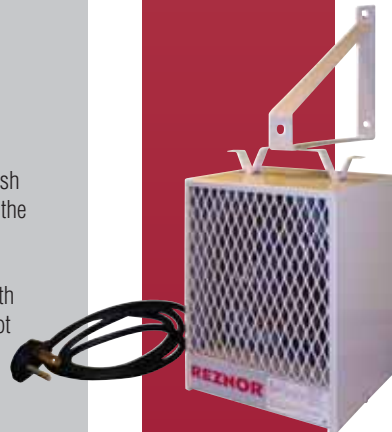
- Almond color
- Epoxy/polyester powder paint finish
- 20-gauge steel
- Adjustable louvers to control airflow
- High-limit temperature control with automatic reset (first level) and single operation thermal fuse (second level)



EGP

Portable Heater, 240/208V, 1-Phase

- Almond color
- Epoxy/polyester powder paint finish
- Handle may be used as a reel for the electric cable
- 6 ft. (2 m) molded electric cable
- High-limit temperature control with automatic reset and operation pilot light
- Electrical insulating mica plates



Electric Heaters

EXUB

Explosion-Resistant Unit Heater

- Red color
- Epoxy/polyester powder paint finish
- 208V, 240V, 480V, 600V
- 1 or 3-phase
- 14-gauge steel cabinet
- Adjustable anodized aluminum louvers
- Cast aluminum control and element enclosure lids NEMA Type 7 and 9 with O-ring
- Multiple horizontal stiffening fan guard wires



EWHB

Wash Down Unit Heater, 1 or 3-Phase

- 208V, 240V, 480V, 600V
- 16-gauge, stainless steel, moisture and corrosion resistant housing
- Adjustable, stainless steel outlet louvers
- Stainless steel rear grille to protect against accidental contact with the fan blade
- High-limit temperature control with automatic reset (manual reset available upon request)
- NEMA 4X non-metallic electrical enclosure
- Disconnect switch (40A maximum) available



ECR & ECS

Ceiling Forced-Air Diffuser

- White, almond, metallic silver, bronze, metallic charcoal, aluminum, semi-gloss black colors*
- Epoxy/polyester powder paint finish
- 208V, 240V, 277V, 347V, 480V, 600V
- 1 or 3-phase
- Outlet grille made of flat ribbon wire
- High-limit temperature control with automatic reset



EMC

Forced-Air Cabinet Unit Heater

- White, almond, metallic silver, bronze, metallic charcoal, aluminum, semi-gloss black colors*
- Epoxy/polyester powder paint finish
- 208V, 240V, 277V, 347V, 480V, 600V
- 1 or 3-phase
- 18-gauge steel
- Extruded aluminum bar grilles
- Field changeable air inlet and outlet
- High-limit temperature control with automatic reset



* Custom colors available upon request

Electric Heaters

EHA

Forced-Air Architectural Wall Heater

- White, almond, metallic silver, bronze, metallic charcoal, aluminum, semi-gloss black colors*
- Epoxy/polyester powder paint finish, optional anodized aluminum
- 120V, 208V, 240/208V, 277V, 347V, 480V, 600V, 1-phase
- Extruded aluminum front grille, 1/8 in. (3.2 mm) thick
- Bottom air outlet
- High-limit temperature control with automatic reset



EHC

Commercial Wall Heater

- White, almond, metallic silver, bronze, metallic charcoal, aluminum, semi-gloss black colors*
- Epoxy/polyester powder paint finish
- 120V, 208V, 240/208V, 277V, 347V, 480V, 600V, 1 or 3-phase
- 18-gauge steel front cover
- Bottom air outlet
- High-limit temperature control with automatic reset



EHL

Residential Wall Heater

- White, almond, metallic silver, bronze, metallic charcoal, aluminum, semi-gloss black colors*
- Epoxy/polyester powder paint finish
- 120V, 208V, 240/208V, 1-phase
- 20-gauge steel cabinet
- 22-gauge steel front cover
- High-limit temperature control with automatic reset



EBHB

Electric Baseboard Heater

- White semi-gloss powdered paint finish, almond optional
- 4H pencil hardness epoxy/polyester powder coat paint finish
- 120V, 208V, 240/208V, 277V, 347V, 480V, 600V, 1-phase
- Robust 22-gauge tight fit body
- Sturdy 20-gauge front panel with design embossed lines
- Welded 20-gauge junction box to back wrap, easy rear access wiring panel



* Custom colors available upon request

Indoor Air Handlers

SSCBL

Extended Capacity, Power-Vented, Gas Fired, Indoor, Packaged Duct Furnaces/Blower Combination, 400,000 - 1,200,000 BTUH Input

- Orifices for natural gas
- Aluminized steel burners with stainless steel insert
- 208-volt power supply
- 24-volt control transformer
- Intermittent spark pilot



SHH

Super High Efficiency, Gas Heating, Separated Combustion, available in 4 sizes, 130MBH, 180MBH, 260MBH and 350MBH

- Patented T_{CORE}³ combustion system with T_{CORE}^{CR} heat exchanger
- ETL certification
- Minimum 91% thermal efficiency throughout modulated range
- Proven separated-combustion technology including shipped-separate vent/combustion air kit (vertical or horizontal)
- Maximum 70°F temperature rise (optional 120°F)

SDH

High Efficiency, Gas Heating, Separated Combustion, 11 sizes, 75 MBH - 400 MBH

- Patented T_{CORE}² combustion system - includes titanium stabilized aluminized steel heat exchanger
- ETL certification
- Minimum 81% thermal efficiency throughout modulated range
- Proven separated-combustion technology including shipped-separate vent/combustion air kit (vertical or horizontal)
- Maximum 70°F temperature rise (optional 120°F)

PDH

High Efficiency, Gas Heating, available in 11 sizes 75 MBH - 400 MBH

- Patented T_{CORE}² combustion system - includes titanium stabilized aluminized steel heat exchanger
- ETL certification
- Minimum 81% thermal efficiency throughout modulated range
- Maximum 70°F temperature rise (optional 120°F)
- Circuit breaker protected transformer for 24-volt controls
- Integrated circuit board with diagnostic indicator lights

Indoor Air Handlers

PEH

Electric Heat, 4 Cabinet Sizes, 13 Electric Heat Sizes

- ETL certification
- 20°-75°F temperature rise (20° temperature rise not available on all sizes)
- Double wall cabinet construction (Model REH)
- Pre-coat white gloss cabinet finish (all units)
- Circuit breaker protected transformer for 24-volt controls

PXH

Configurable, Optional Hydronic Heating Module, Forward Curve Blowers allowing for Standard or High Efficiency Motors and VFD Control

- ETL certification
- Pre-coat white gloss cabinet finish (all units)
- Circuit breaker protected transformer for 24-volt controls
- Rubber-in-sheer vibration isolation

Vertical Indoor Air Handlers

CAUA with ACUA

Indoor, Vertical (Upflow) Split System Provides Efficient Heating, Cooling and/or Makeup Air, 150 - 400 MBH

- Orifices for natural gas
- Centrifugal blower
- Burner rack with inshot burners
- Direct ignition with 100% lockout
- Single-stage combination gas valve
- 230/1/60 supply voltage

Outdoor Air Handlers

RPBL

Extended Capacity, Power-Vented, Gas Fired, Outdoor, Packaged Duct Furnaces/Blower Combination, 400,000 - 1,200,000 BTUH Input

- Orifices for natural gas
- Aluminized steel heat exchanger (When inlet air temperature is below 40°F or temperature rise is less than 40°F, optional stainless steel heat exchanger is recommended)
- Aluminized steel burners with stainless steel insert
- 208-volt power supply

RBL

Packaged Air Handling Unit

- Blower/filter cabinet
- Twin centrifugal blowers
- 1 HP, open drip proof motor
- Permanently lubricated ball bearings (1 - 5 HP)
- Pillow block bearings (7-1/2 - 20 HP)
- Adjustable belt drive
- 115-volt supply voltage

Outdoor Air Handlers

RHH

Super High Efficiency, Gas Heating, available in 4 sizes, 130 MBH, 180 MBH, 260 MBH and 350 MBH

- Patented T_{CORE}³® combustion system with T_{CORE}^{CR} heat exchanger
- Minimum 91% thermal efficiency throughout modulated range
- Maximum 70°F temperature rise (optional 120°F)
- Circuit breaker protected transformer for 24-volt controls
- Integrated circuit board with diagnostic indicator lights

RDH

High Efficiency, Gas Heating, available in 11 sizes 75 MBH - 400 MBH

- Patented T_{CORE}²® combustion system - includes titanium stabilized aluminized steel heat exchanger
- ETL certification
- Minimum 81% thermal efficiency throughout modulated range
- Maximum 70°F temperature rise (optional 120°F)
- Circuit breaker protected transformer for 24-volt controls
- Integrated circuit board with diagnostic indicator lights

REH

Electric Heat, 4 Cabinet Sizes, 13 Electric Heat Sizes

- ETL certification
- 20°-75°F temperature rise (20° temperature rise not available on all sizes)
- Double wall cabinet construction
- Pre-coat white gloss cabinet finish (all units); 60 gloss minimum and RAL 9001, meets ASTM B117 specification for salt spray for 1,000 hours
- Circuit breaker protected transformer for 24-volt controls

RXH

Configurable, Optional Hydronic Heating Module, Forward Curve Blowers allowing for Standard or High Efficiency Motors and VFD Control

- ETL certification
- Double wall cabinet construction
- Pre-coat white gloss cabinet finish (all units); 60 gloss minimum and RAL 9001, meets ASTM B117 specification for salt spray for 1,000 hours
- Circuit breaker protected transformer for 24-volt controls
- Rubber-in-sheer vibration isolation



Optional Accessories

CL1

Single-Stage Heating/Cooling Thermostat

- 24 Volt
- Non-programmable
- 50° - 90°F
- For Model RPB only



CL9

Override Thermostat for Electronic Modulation

- Low voltage
- Electronic modulating
- 60-85°F
- MUA applications vertical mounting
- SPST
- Line voltage



CL22

Two-Stage Heating/Cooling Thermostat

- 24 Volt
- Non-programmable
- 50° - 90°F



CL23

Electronic Two-Stage Heating/Cooling Thermostat

- 7-Day programmable
- 24 VAC
- LCD touch-screen display
- Microprocessor control
- Selectable output staging



CL33 Wall & RCT5 Console Mounts

Electronic Programmable Thermostat

- 24 Volt
- Auxiliary relay
- Up to 2 stages heating/cooling



Optional Accessories

CL52 Wall & RTC9 Console Mounts

Electronic Single-Stage Heating/Cooling Thermostat

- 5 Day/2 Day Programmable
- LCD Display



CL77

4 Wire Space Mounted Sensor

Display provides IQ system information:

- Degree C or F selectable
- Temperature setpoint buttons
- Occupied/unoccupied mode button
- Fan speed control



CL78

Wall Mounted DDC Temperature Monitor

- Space temperature and humidity sensor with room setpoint adjustment
- 5 wire device, 3 wire communication
- 24 volt power and ground



RB5

Wall Mounted Remote Monitor Display

- Display allows access to unit test features, schedules, discharge air setpoints, fan control, alarms
- 4 wire device
- 2-wire 24 VAC power
- 2-wire communication



Vertical Indoor Air Handlers

CAUA with ACUA

Indoor, Vertical (Upflow) Split System Provides Efficient Heating, Cooling and/or Makeup Air, 150 - 400 MBH (heat)/5 - 20 DX cooling

- Orifices for natural gas
- Centrifugal blower
- Burner rack with inshot burners
- Direct ignition with 100% lockout
- Single-stage combination gas valve
- Multiple inlet air configurations



Indoor Air Handlers

SSCBL

Extended Capacity, Power-Vented, Gas Fired, Indoor, Packaged Duct Furnaces/Blower Combination, 400,000 - 1,200,000 BTUH Input

- Orifices for natural gas
- Aluminized steel burners with stainless steel insert
- 208-volt power supply
- 24-volt control transformer
- Intermittent spark pilot
- DDC plus electro-mechanical control options



SHH

Super High Efficiency, Gas Heating, Separated Combustion, available in 4 sizes, 130MBH, 180MBH, 260MBH and 350MBH

- Patented T_{CORE}³ combustion system with T_{CORE}^{CR} heat exchanger
- ETL certification
- Minimum 91% thermal efficiency throughout modulated range
- Proven separated-combustion technology including shipped-separate vent/combustion air kit (vertical or horizontal)
- Maximum 70°F temperature rise (optional 120°F)
- Dedicated reheat DX/chilled water coil
- 5 - 20 tons split DX custom coil
- Custom chilled water coil
- DDC plus electro-mechanical control options

Indoor Air Handlers

SDH

High Efficiency, Gas Heating, Separated Combustion, 11 sizes, 75 MBH - 400 MBH

- Patented T_{CORE}² combustion system - includes titanium stabilized aluminized steel heat exchanger
- ETL certification
- Minimum 81% thermal efficiency throughout modulated range
- Proven separated-combustion technology including shipped-separate vent/combustion air kit (vertical or horizontal)
- Maximum 70°F temperature rise (optional 120°F)
- Cooling options same as SHH model
- DDC plus electro-mechanical control options

PDH

High Efficiency, Gas Heating, available in 11 sizes 75 MBH - 400 MBH

- Patented T_{CORE}² combustion system - includes titanium stabilized aluminized steel heat exchanger
- ETL certification
- Minimum 81% thermal efficiency throughout modulated range
- Maximum 70°F temperature rise (optional 120°F)
- DDC plus electro-mechanical control options

PEH

Electric Heat, 4 Cabinet Sizes, 13 Electric Heat Sizes (22 - 120 kW)

- ETL certification
- 20°-75°F temperature rise (20° temperature rise not available on all sizes)
- Double wall cabinet construction (Model REH)
- Pre-coat white gloss cabinet finish (all units)
- DDC plus electro-mechanical control options

PXH

Configurable, Optional Hydronic Heating Module, Forward Curve Blowers allowing for Standard or High Efficiency Motors and VFD Control

- ETL certification
- Pre-coat white gloss cabinet finish (all units)
- DDC plus electro-mechanical control options

Outdoor Air Handlers

RPB/RPBL

Extended Capacity, Power-Vented, Gas Fired, Outdoor, Packaged Duct Furnaces/Blower Combination, 100,000 - 1,200,000 BTUH Input

- Orifices for natural gas
- Aluminized steel heat exchanger (When inlet air temperature is below 40°F or temperature rise is less than 40°F, optional stainless steel heat exchanger is recommended)
- Aluminized steel burners with stainless steel insert
- 208-volt power supply



RHH

Super High Efficiency, Gas Heating, available in 4 sizes, 130 MBH, 180 MBH, 260 MBH and 350 MBH

- Patented T_{CORE}³ combustion system with T_{CORE}^{CR} heat exchanger
- Minimum 91% thermal efficiency throughout modulated range
- Maximum 70°F temperature rise (optional 120°F)
- DDC plus electro-mechanical control options
- Evaporative cooling available



RDH

High Efficiency, Gas Heating, available in 11 sizes 75 MBH - 400 MBH

- Patented T_{CORE}² combustion system - includes titanium stabilized aluminized steel heat exchanger
- ETL certification
- Minimum 81% thermal efficiency throughout modulated range
- Maximum 100°F temperature rise (optional 120°F)
- DDC plus electro-mechanical control options

REH

Electric Heat, 4 Cabinet Sizes, 13 Electric Heat Sizes (20 - 120 kW)

- ETL certification
- 20°-75°F temperature rise (20° temperature rise not available on all sizes)
- Double wall cabinet construction
- Pre-coat white gloss cabinet finish (all units); 60 gloss minimum and RAL 9001, meets ASTM B117 specification for salt spray for 1,000 hours
- DDC plus electro-mechanical control options
- SCR electric heat control

Outdoor Air Handlers

RXH

Configurable, Optional Hydronic Heating Module, Forward Curve Blowers allowing for Standard or High Efficiency Motors and VFD Control

- ETL certification
- Double wall cabinet construction
- Pre-coat white gloss cabinet finish (all units); 60 gloss minimum and RAL 9001, meets ASTM B117 specification for salt spray for 1,000 hours
- DDC plus electro-mechanical control options

Evaporative Cooling

REC

For Makeup Air, designed as freestanding module with duct flanges for connection upstream from an air moving device

- Easily accessible, self-cleaning, high-efficiency evaporative media of 6" rigid cellulose media
- Thermally protected water pump
- Electrical motor-protection float switch with stainless steel arm
- Float valve and bleed line
- 115 volt supply voltage
- Terminal block wiring



Light Commercial Air Handlers

B6TM

For Split System Heat Pumps & Air Conditioners

- Two speed, 2 HP blower motor
- Coils constructed using 3/8" OD seamless copper tubing mechanically expanded to highly efficient aluminum fins to maximize heat transfer
- Coils shipped with a dry Nitrogen
- 7½ ton model is a single refrigeration circuit, 10 ton model is dual circuited
- Factory installed bi-flow expansion valves approved for straight cool or heat pump operation
- Drain pans coated for corrosion protection, ¾ inch FPT drain connection
- Heater kits available in 10 - 36 kW



B6BMMO

Multi-Speed, Multi-Posed, for Split System Heat Pumps & Air Conditioners 18,000 - 60,000 BTUH

- Galvanized steel durable, attractive cabinet with a polyester urethane finish
- Corrosion-resistant plastic drain pan
- Horizontal, upflow, downflow and vertical applications
- Plug-in wire connections, built-in filter rack
- Plug-in heater kits available in 5kW - 30kW (not for use in 115 volt units)



MAPS® Packaged Systems

RCC, RDC, RDCC, RECC, REDC, RCB, RDB, RDCB, RDDB, RECB, REDB

Cooling, Heating, Dehumidifying
MUA Rooftop Systems Cool and Heat
High Volumes of Outside Air, Cooling
Capacity 3,600 - 12,500 CFM – 20 Tons
to 60 Tons

- 20% - 100% capacity control
- Modulated capacity scroll compressor with internal motor overload
- Fully interlaced coils
- Double wall construction standard - R9 or higher value
- Hinged access doors with handles
- Re-Heat Pump™ dedicated reheat cycle
- 2 - 4 staged control
- Optional SCR control
- 3 - 8 Stages of cooling
- 6:1 gas modulation
- Natural and propane gas



Light Commercial Packaged Systems

R7TQ

Packaged Gas/Electric

- Meet or exceed ASHRAE 90.1 - 2013
- Fits Carrier pre-existing curbs, eliminating the cost of an adaptor curb
- Hinged access doors for easy access to blower, controls and filters
- State-of-the-art scroll compressor
- High efficiency blower motor
- High-pressure switches featuring manual reset
- Hi/low service ports for easy service allow quick access
- Permanently lubricated heavy duty PSC motor requires no maintenance
- 90 VA Transformer: Includes 4 Amp circuit breaker to protect the low voltage circuit
- Factory liquid line filter driers installed for convenience
- Crankcase heater provides protection from liquid flood back and future compressor failures
- Two-stage heating & cooling
- All-aluminum coils for high corrosion resistance and increased heat transfer; 30% less refrigerant to reduce costs and save time
- 12.7 IEER
- 6, 7½, 10 and 12½ ton



Light Commercial Packaged Systems

P7TQ

Packaged Electric/Electric

- Meet or exceed ASHRAE 90.1 - 2013
- Fits many Carrier pre-existing curbs
- Hinged access doors
- State of the art scroll compressor
- High efficiency blower motor
- High-pressure switches featuring manual reset
- Hi/low service ports for easy service allow quick access
- Permanently lubricated heavy duty PSC motor requires no maintenance
- Two-stage cooling & single-stage heating
- Up to 12.9 IEER
- 6, 7½, 10 and 12½ ton



DF6SF

iHybrid® Dual Fuel, 80,000 - 120,000
BTUH Input, Single Phase

- Copeland Ultra-Tech® Scroll state-of-the-art two-stage compressor
- Swept-wing fan blade combined with custom venturi condenser fan
- Compressor sound blanket
- 2-stage gas heat/2-stage cooling
- Variable-speed blower
- 15 SEER, 81% AFUE, 8.0 HSPF, 12 EER
- 2 - 5 ton



P8SE

Packaged Air Conditioner, Single and Three Phase

- 5-speed ECM blower motor provides wide range of airflows
- Copeland Scroll® state-of-the-art compressor
- Indoor and outdoor all-aluminum coils
- TXV externally equalized provides precise refrigerant control under varying load conditions
- 14 SEER, up to 11.5 EER
- 3, 4 and 5 ton



Light Commercial Packaged Systems

Q6SE

Packaged Heat Pump, Single and Three Phase

- Copeland Scroll state-of-the-art compressor
- 5-speed ECM blower
- TXV externally equalized provides precise refrigerant control under varying load conditions
- Suction accumulator protects from liquid flood back and future compressor failures
- 14 SEER, 8.0 HSPF, 11 EER
- 2 - 5 ton



R6GF

Gas/Electric, Installed on Roof or Slab, Single Phase

- Copeland Ultra-Tech Scroll state-of-the-art two-stage compressor
- Swept-wing fan blade combined with custom venturi condenser fan
- Compressor sound blanket
- 2-stage heat/cool with variable-speed blower
- 15 SEER, 81% AFUE, 12 EER
- 2 - 5 Ton



R6GI

iQ Drive® Gas/Electric, Ultra-High Efficiency, Single Phase

- iQ Drive inverter driven Samsung rotary compressor
- Interface control board - two digit LED
- Cooling operation: 50 °F to 125 °F
- Five minute restart time delay
- EXV control - precise refrigerant superheat control provided by electronic expansion valve
- Suction accumulator protects from liquid flood back and future compressor failures
- Hinge access panel is provided to all controls and the compressor to make servicing easier for the contractor
- 20 SEER, 81% AFUE, up to 13 EER
- 2 - 5 Ton



iQ
Drive

Light Commercial Packaged Systems

R8GE

Packaged Gas/Electric

- State-of-the-art Copeland Scroll compressor
- All-aluminum coils
- High and low pressure switches for added compressor protection
- Horizontal or downflow convertible air delivery
- SmartLite® ignition control board
- 14 SEER, 81% AFUE, 11.2 EER



R8HE

Packaged Gas/Electric, Single and Three Phase

- Copeland Scroll state-of-the-art compressor
- All-aluminum indoor and outdoor coils
- Powder coated wire guard and plastic mesh never rust hail guard
- Access panels provided to all controls and the compressor
- Permanently lubricated heavy duty PSC motor requires no maintenance
- 95% AFUE, 14 SEER, up to 12 EER
- 2 - 5 ton



Condensers

MASA

Optimized for use with any of the PREEVA Series of indirect fired HVAC systems

- Normal operating range 55° to 115°F ambient
- Dual compressor system to provide 3 stage capacity control - 1/3, 2/3 or full
- Pre-coat off-white gloss cabinet finish, G-90 coated material on exterior surface and primer on interior surface, 60 gloss, meets ASTM B117 specification for salt spray to 1,000 hours
- Service access door
- Corrosion resistant, easily cleanable, all-aluminum condenser coil
- Liquid line filter driers - shipped loose with unit for field installation
- Refrigerant receiver for each circuit
- Fork lift openings built into the heavy gauge base
- 208-230/3/60 unit supply voltage (20 ton unit available in 460/3/60 only)
- 24 Volt controls



Light Commercial Condensers

WSA2BD/WSH2BE

Split System 13 SEER Air
Conditioner/14 SEER Heat Pump,
Slab or Rooftop Mounting, 3-Phase

- Wire guard and mesh hail guard protect against flying debris and other hazards
- Corrosion resistant composite base pan
- All aluminum outdoor coil
- Heavy duty permanently lubricated PSC motor requires no maintenance
- Full service brass valves are easily accessible and simplify servicing
- High pressure switch with auto-reset
- Demand defrost control
- 3, 4 & 5 ton



BSA2BD/BSH2BD & BSA2BE/ BSH2BE

Builder's Series Split System Air
Conditioner/Heat Pump, Slab or
Rooftop Mounting, 13 SEER, 7.7
HSPF & 14 SEER, 8.0 HSPF

- Mesh hail guard protects against flying debris and other hazards
- Corrosion resistant composite base pan
- All aluminum outdoor coil
- Heavy duty permanently lubricated PSC motor requires no maintenance
- Full service brass valves are easily accessible and simplify servicing
- Demand defrost control
- 2 - 5 ton



S6BQ/T6BQ

Split System Air Conditioner/Heat
Pump, 12.9 IEER/12.2 IEER, 3.3
COP, Two-Stage

- State-of-the-art Copeland Ultra Tech® Scroll compressor
- High/low pressure switches
- Galvanized steel cabinet with a polyester urethane finish
- Copper tube/aluminum fin indoor and outdoor coils designed to optimize heat transfer
- Heavy duty permanently lubricated PSC motor requires no maintenance
- Crankcase heater
- 7 ½ & 10 ton



Heat Pump additional features:

- Time/temperature defrost control
- Suction accumulator protection

Destratification

AEB

Vertical, Indoor or Outdoor, Cooling Capacity 3,000 -
150,000 CFM – 7.5 Ton to 200 Ton, Heating Capacity
200 - 6,000 MBH (Output)

- Indirect fired designed for indoor or outdoor installation where air turnover (destratification) is desired
- Hinged access doors with stainless steel piano hinges, compression latches and safety switch
- Numbered control wiring, terminal strip and component identification labels
- EEPAC high efficiency fan motor with adjustable 1.5 s.f. V-Belt drive
- Control transformer with service switch and circuit breaker
- All wiring external to control cabinet within BX cable or conduit



Ventilation Air (DOAS)

ZQYRA

Hybrid IAQ Ventilator, 600 - 1,500 CFM

- Modulating direct expansion heat pump system
- Durable total enthalpy wheel (ARI Certified)
- Field convertible vertical or horizontal flanged supply/return air openings
- Outdoor intake & exhaust rain hoods
- MERV 8 filters for outside and return air streams
- Long lasting G90 painted exterior
- Full double wall insulated construction in supply air stream
- Bottom lifting lugs
- Simple user interface to setup and control unit
- Supply & return fans: electronically commutated motor (ECM) - 96% efficiency



Dedicated Outdoor Air Systems (DOAS)

R7DA

Dedicated Outdoor Air System (DOAS), 6, 7½, 10 and
12½ ton packaged DX

- Patented hot gas reheat
- Low, medium & high gas heat
- 304 stainless steel heat exchanger
- 208/230V & 460V power
- Unit mounted disconnect available
- Standard thermostat connection
- 4.1 ISMRE efficiency meets standard 90.1-2016
- R410-A refrigerant
- Lightweight all-aluminum evaporator coil
- Corrosion proof drain pan
- Overflow alarm switch available
- High altitude & propane conversion kits
- Field convertible horizontal supply & return
- DDC plus electro-mechanical control options
- BACNet available
- Outdoor air available (field or factory installed)
- 2 position manual & motorized outdoor air intake available (factory or field installed)
- Filtered (MERV 5) & hooded intake
- CO2 demand control available
- Building pressurization control



Dedicated Outdoor Air Systems (DOAS) continued

YDHA

Space Conditioning, 1,000 - 10,000 CFM
 - 5 Tons to 30 Tons, Heating Capacity
 75 - 600 MBH Gas Heat - 10 - 90 kW
 Electric Heat

- High efficiency digital scroll technology
- Exceeds ASHRAE standard 90.1 requirements
- Includes T_{CORE}³® condensing heat technology
- Fully interlaced coils
- Compressor anti-cycle programming
- Natural gas or propane furnace
- Double wall foam panel construction - R13
- Hinged access doors with slam latches
- Condensing gas heat (92%)
- Integral energy recovery
- Low ambient dehumidification operation
- Slide out: heat exchanger(s), fan & wheel



YDMA

Makeup Air Ventilation, 1,000 - 10,000 CFM - 5 Tons to 30 Tons, Heating Capacity 75 - 800 MBH - 10 - 90 kW Electric Heat

- High efficiency digital scroll technology
- ECM condenser fans and optimized coil designs
- Exceeds ASHRAE standard 90.1 requirements
- Includes T_{CORE}³ condensing heat technology
- Fully interlaced coils
- Compressor anti-cycle programming
- Natural gas or propane furnace
- Double wall foam panel construction - R13
- Hinged access doors with slam latches
- Condensing gas heat (92%)
- Integral energy recovery
- Low ambient dehumidification operation
- Slide out: heat exchanger(s), fan & wheel



Optional Accessories

CL1

Single-Stage Heating/Cooling Thermostat

- 24 Volt
- 50° - 90°F
- Non-programmable
- For Model RPB only



CL9

Override Thermostat for Electronic Modulation

- Low voltage
- MUA applications
- Electronic modulating
- vertical mounting
- 60-85°F
- SPST
- Line voltage



CL22

Two-Stage Heating/Cooling Thermostat

- 24 Volt
- 50° - 90°F
- Non-programmable



CL23

Electronic Two-Stage Heating/Cooling Thermostat

- 7-Day programmable
- Microprocessor control
- 24 VAC
- LCD touch-screen display
- Selectable output staging



CL33 Wall & RCT5 Console Mounts

Electronic Programmable Thermostat

- 24 Volt
- Up to 2 stages heating/cooling
- Auxiliary relay



CL52 Wall & RTC9 Console Mounts

Electronic Single-Stage Heating/Cooling Thermostat

- 5 Day/2 Day Programmable
- LCD Display



CL77

4 Wire Space Mounted Sensor Display provides IQ system information:

- Degree C or F
- Occupied/unoccupied mode
- Temperature setpoint buttons
- Fan speed control



CL78

Wall Mounted DDC Temperature Monitor

- Space temperature and humidity sensor with room setpoint adjustment
- 5 wire device, 3 wire communication
- 24 volt power and ground



RB5

Wall Mounted Remote Monitory Display

- Display allows access to unit test features, schedules, discharge air setpoints, fan control, alarms
- 4 wire device
- 2-wire 24 VAC power
- 2-wire communication



REZNOR® VRF Product Line

Indoor Units

BDDH-() () SAK BDDH-() () SBK

High Static Pressure Ducted Type Indoor Unit with Condensate Pump

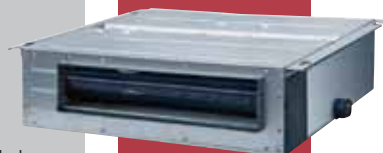
- Static pressure can be up to 0.8 WC
- Maintenance port for easy access, service and repair
- Basic washable filters
- Built in condensate pump, with float switch pumps up to 39 inches
- Can be installed with circular or rectangular air duct
- System monitors itself for freeze protection, fan motor overload, temperature sensor malfunction
- Premium wired controller included



BDDL-() () SAK

Low Static Pressure Ducted Type Indoor Unit

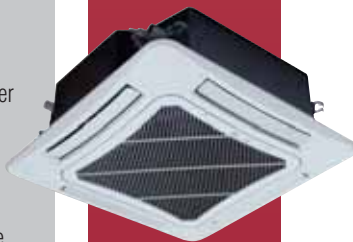
- Provides a comfortable and quiet environment
- Built in condensate pump, with float switch pumps up to 39 inches
- Basic washable filters included
- Easy installation and maintenance featuring, tabbed plastic filter, detachable fan motor, independent water pump assembly, electrical box assembly
- System monitors itself for freeze protection, fan motor overload, temperature sensor malfunction
- Premium wired controller included



BD4W-() () SAK

4-Way Cassette Indoor Unit

- Auto operation, seven fan speeds and strong airflow
- Ultra-quiet operation, DC inverter motor offers stepless speed regulation
- Built in condensate pump, pumps up to 39 inches
- System monitors itself for freeze protection, fan motor overload, temperature sensor malfunction
- Face frame panel included



BD4WC-() () SAK

4-Way Compact Cassette

- Fits in a standard 2-by-2 ceiling grid
- Auto operation, seven fan speeds
- DC inverter motor offers stepless speed regulation
- Built in condensate pump, pumps up to 39 inches
- Face frame panel included



Indoor Units

BD2W-() () SAK

2-Way Cassette Indoor Unit

- Used in larger rectangular spaces, such as hallways and offices
- Adjustable louvers to ensure customizable air distribution
- Elegant, attractive front panel
- Built in condensate pump, pumps up to 39 inches
- 2-way air outlet improves airflow providing comfort and even air distribution in more elongated rooms
- System monitors itself for freeze protection, fan motor overload, temperature sensor malfunction, humidity
- Face frame panel included



B-HW-() () A3AK

Wall-Mounted Indoor Unit

- Up & down air outlet
- Washable filter
- Cold air prevention function warms the air before the fan is engaged providing warm air on start
- System monitors itself for freeze protection, fan motor overload, temperature sensor malfunction
- Error code indicator



BDFC-() () JAK

Floor/Ceiling Type Indoor Unit

- Can be mounted overhead in a hoisted position or mounted in seated position on the wall, close to the floor
- Elegant, attractive front panel
- Convenient space provided for condensate pump installation
- System monitors itself for freeze protection, fan motor overload, temperature sensor malfunction
- Horizontal and vertical air swing



BDCO-() () JAK

Console Type Indoor Unit

- Radiator-type and knee-wall installations, like finished attic spaces with low walls
- Multiple fan speed
- Front grille is easily detachable for easy filter cleaning
- Durable, long-life, washable filter included
- Configurable bi-directional airflow
- System monitors itself for freeze protection, fan motor overload, temperature sensor malfunction



B DFA-() () JAK

Fresh Air Unit

- Fresh Air DC Inverter system combines with V5 outdoor unit
- Pre-heats and pre-cools outdoor air before entering building conditioned space
- Up to 1470 cfm (2,500 M3/Hr)



Outdoor Units

V5BV-()WM(A/B)K

Mini Heat Pumps, Multi-Zone

- 3, 4 and 5 ton condensers
- These stand-alone condensers can be combined with up to 10 indoor units
- -22° F Heating
- DC Inverter compressor technology
- 208/230, single phase
- Non-polar communication network
- Available in Ultra, rated to heat at -22 F and below 100% of nominal capacity at -20.8 F



V5BV-()WMBC

Heat Pumps, Multi-Zone

- Available in 208/230 and 460V three phase
- Available in 6, 8 and 10 tons
- Modular design flexibility
- Wide operating temperature range
- Aluminum-manganese, anti-rust alloy gold fins are coated with an epoxy resin
- Intelligent debugging simplifies start up
- Auto addressing of indoor and outdoor units
- Outdoor units can be linked up to 30 tons with up to 60+ indoor units
- Non-polar communication network



V5BV-R-()WMBC

Heat Recovery System, Multi-Zone

- Available in 208/230 and 460V three phase
- Available in 6, 8 and 10 tons
- DC inverter technology
- Auto addressing of indoor and outdoor units
- Outdoor units can be linked up to 30 tons with up to 60+ indoor units
- Non-polar communication network



V5 Branching Units

V5BV-R1K

Mode Exchange Unit

- 1 port
- Capacity each port 48 MBTUH
- Up to 6 connectable indoor units each port
- 208/230, single phase
- Required for heat recovery
- Each port can be in heating or cooling mode independently



V5BV-R2K

Mode Exchange Unit

- 2 port
- Capacity each port 48 MBTUH
- Up to 6 connectable indoor units each port
- 208/230, single phase
- Required for heat recovery
- Each port can be in heating or cooling mode independently
- "Pass-through" so it doesn't require the use of a Y-branch



V5BV-R4K

Mode Exchange Unit

- 4 port
- Capacity each port 48 MBTUH
- Up to 6 connectable indoor units each port
- 208/230, single phase
- Required for heat recovery
- Each port can be in heating or cooling mode independently
- "Pass-through" so it doesn't require the use of a Y-branch



V5BV-R8K

Mode Exchange Unit

- 8 port
- Capacity each port 48 MBTUH
- Up to 6 connectable indoor units each port
- 208/230, single phase
- Required for heat recovery
- Each port can be in heating or cooling mode independently
- "Pass-through" so it doesn't require the use of a Y-branch



VRF Controls

RC

Wireless Remote Controller

- Auto, cooling, dehumidifying, fan and heating operation modes
- 6 levels of fan speed
- Child lock, drying, health, ventilation, turbo, sleep, light, absence, IFeel, and timer functions
- Clock display and indoor/outdoor ambient temperature viewing functions
- Up/down swing and left/right swing



WRC1

Wired Remote Controller

- Comes standard with every ducted indoor unit, optional for ductless indoor units
- LCD with touch buttons
- 24 hour timer setting for on/off
- 7 levels of fan speed, up/down swing and left/right swing
- Auto, cooling, dehumidifying, fan, heating, floor heating, 3D heating and space heating operation modes



WRC-RD

Wired Receiver

- Allows use of wireless remote
- Five indicating LEDs
- Optional for High ESP, Low ESP, Slim Ducted Duct Type and Fresh Air Processing indoor units
- Temperature displayed in Fahrenheit or Celsius



CC-255

Central Controller

- High-resolution color LCD
- 7" touch screen for easy operation
- Project setting, parameter viewing, malfunction record and access management functions
- Up to 255 indoor units centrally controlled
- Elegant and fashionable appearance
- Embedded installation in wall with projecting thickness only of 7/16 inch
- Scheduling, zoning, individual and group control
- Connectable with network of indoor units or outdoor units
- Independent power supply in 110-240V wide voltage range
- Low cost building management solution



VRF Controls

CC-32

Smart Zone Central Controller

- High-resolution color LCD
- 7" touch screen for easy operation
- Up to 32 indoor units centrally controlled
- Elegant and fashionable appearance
- Embedded installation in wall with projecting thickness only of 7/16 inch
- Connectable with network of indoor units or outdoor units
- Independent power supply in 110-240V wide voltage range
- Project setting, parameter viewing, malfunction record and access management functions
- Scheduling, zoning, individual and group control
- Low cost building management solution



COM-S

Kit for Commissioning Software

- Very competitively priced
- Automatic commissioning
- Software can monitor each system, equipment and part
- Real-time control allows setting air conditioner indoor units, like start/stop, temperature, fan speed, operation mode, air conditioner outdoor units and gateways
- Automatically records for troubleshooting via data analysis
- Much lower cost than comparable troubleshooting tools



LDM-S

Long-Distance Monitoring Software

- Requires the MOD-G or BAC-G ModBus Gateway
- CAC web-based remote monitoring and control system
- Full remote control, monitoring, and scheduling at lower cost than traditional BMS



VRF Controls

MOD-G

ModBus Gateway

- Provides V5 system with the Modbus protocol interface when connecting to the building
- Real-time monitoring of on/off, mode, temperature operations
- Controls all the units on and off switches
- Monitors unit errors
- One Modbus gateway can support 16 outdoor units and 128 indoor units

BAC-G

BACnet Modbus Gateway

- International standard BACnet/IP interface, which has passed BTL certification
- Real-time monitoring of on/off, mode, temperature operations
- BACnet and Modbus are available in one gateway
- Monitors unit errors
- 8 DI/DO interfaces for safety shutdown, interlocking exhaust fans, makeup air, lighting, motion sensors, other equipment and accessories
- Large storage capacity of unit operation data for up to 6 months



Standing behind your Investment

Reznor variable refrigerant flow (VRF) multi-zone systems offer a 5-Year limited parts warranty. Compressors carry a 7-Year warranty. To learn more about our product warranties, ask your Reznor contractor.



Limited Product Warranty.

Reznor warrants to the original owner-user that these products will be free from defects in material or workmanship. For specific details see actual warranty or contact your Reznor sales representative.

REZNOR®

ReznorHVAC.com

Specifications and illustrations subject to change without incurring obligation.

Reznor® is a registered trademark of Nortek Global HVAC, LLC. TCORE3®, TCORE2®, TCORECR®, MacroChannel®, MAPS®, Thermocore®, iHybrid®, iQ Drive® and SmartLite® are registered trademarks of Nortek Global HVAC, LLC. Re-Heat Pump™ is a trademark of Nortek Global HVAC, LLC. Copeland Scroll and Copeland UltraTech Scroll are registered trademarks of Emerson Climate Technologies, Inc.

© Nortek Global HVAC, LLC 2019. All Rights Reserved. Printed in U.S.A.

118F-0819