

## INDIRECT FIRED AIR HEATER ELECTRICAL WIRING MANUAL



### WARNINGS

- 1 This appliance must only be installed by a competent person in accordance with the requirements of the Codes of Practice or the rules in force.
- 2 All external wiring **MUST** comply with the current IEE wiring regulations.

# Contents

## SECTION 1

External Connections (all models)

### MODELS COVERED IN SECTIONS 2 TO 5:

IDF2DX90 (S1/S2), IDF2DX120 (S1/S2), IDF2DX150 (S1/S2),  
IDF2BDX90 (S1/S2), IDF2BDX120 (S1/S2), IDF2BDX150 (S1/S2)

## SECTION 2

Mains, Inverter and Heat Exchanger\* Wiring

## SECTION 3

Mitsubishi FTC Controller Wiring

## SECTION 4

Fan Control and Damper\* Wiring

## SECTION 5

I/O Modules and Sensor Wiring

\*Where fitted

### MODELS COVERED IN SECTIONS 6 TO 9:

IDF3DX180 (S1/S2), IDF4DX200/240 (S1/S2),  
IDF3BDX180 (S1/S2), IDF4BDX200/240 (S1/S2)

## SECTION 6

Mains/Inverter and Heat Exchanger\* Wiring

## SECTION 7

Mitsubishi FTC Controller Wiring

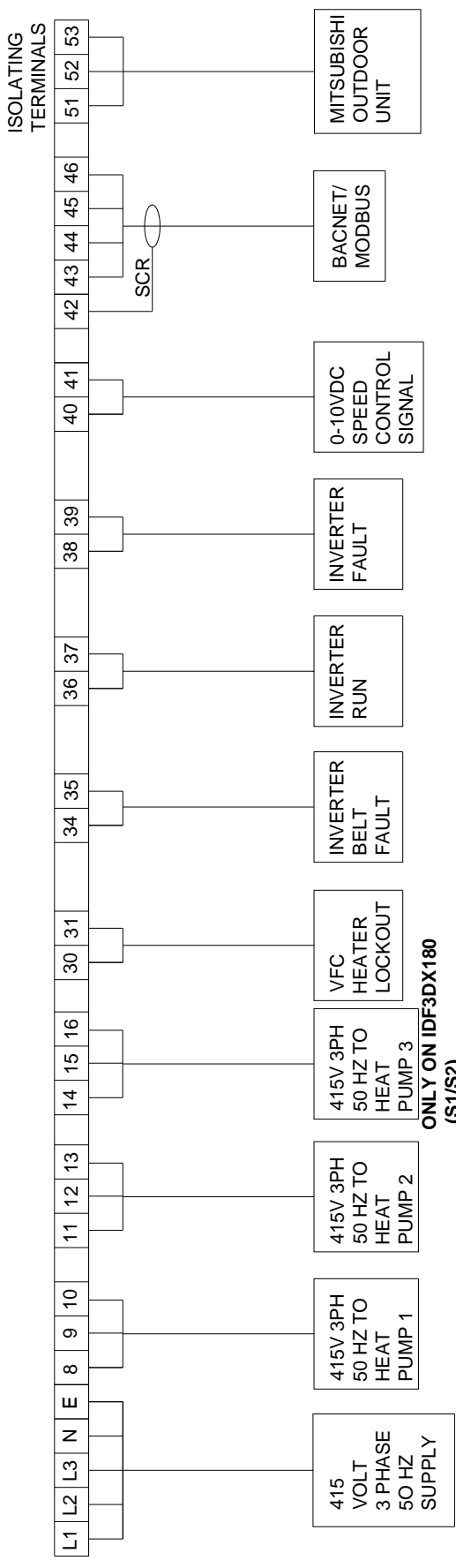
## SECTION 8

Fan Control and Damper\* Wiring

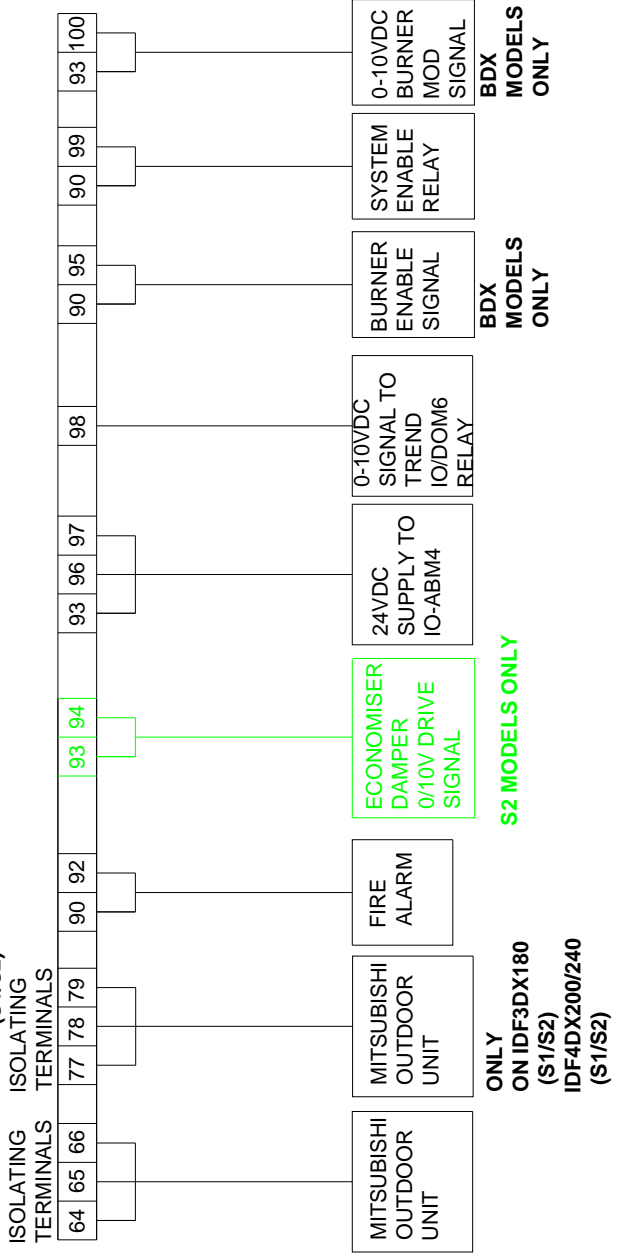
## SECTION 9

I/O Modules and Sensor Wiring

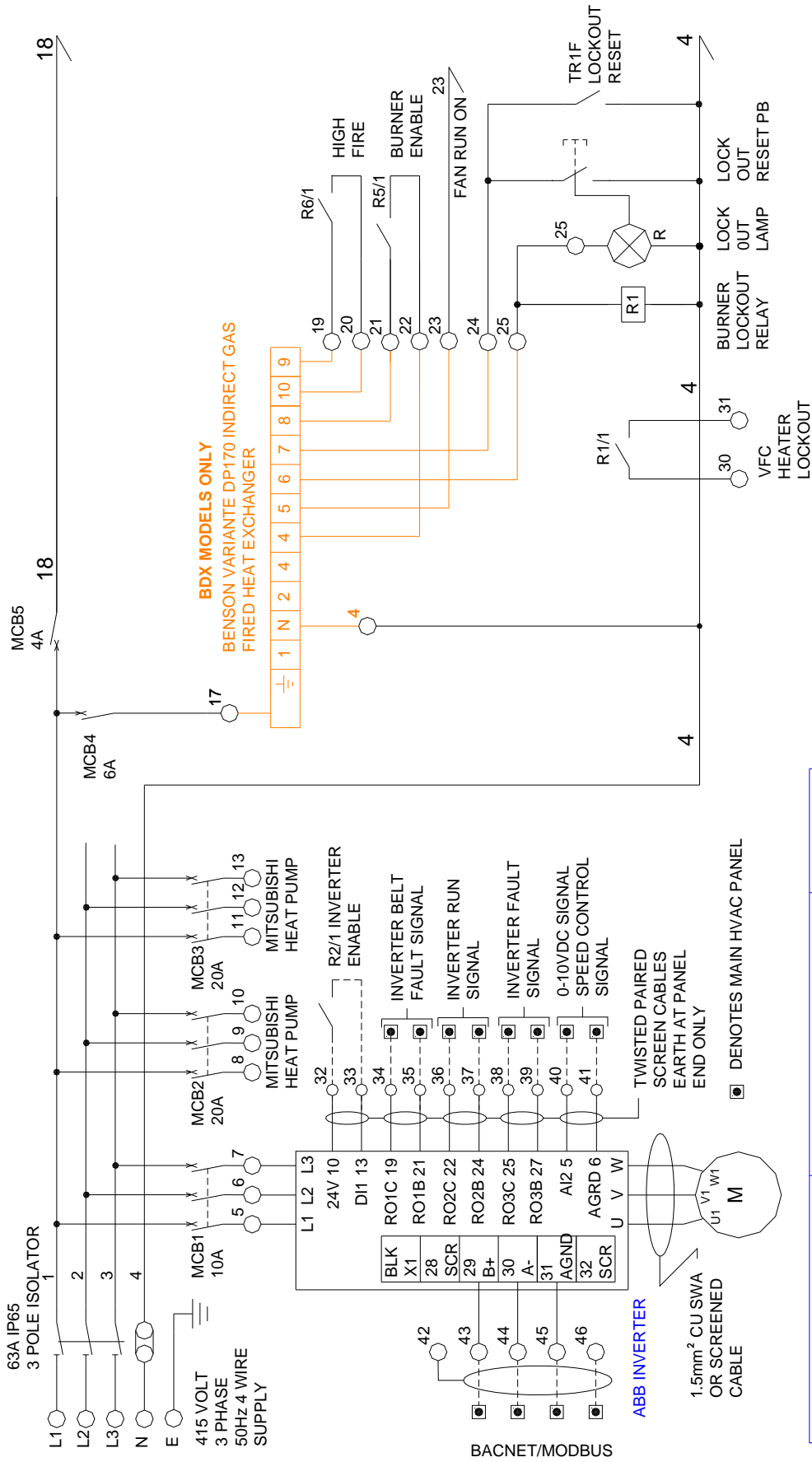
\*Where fitted



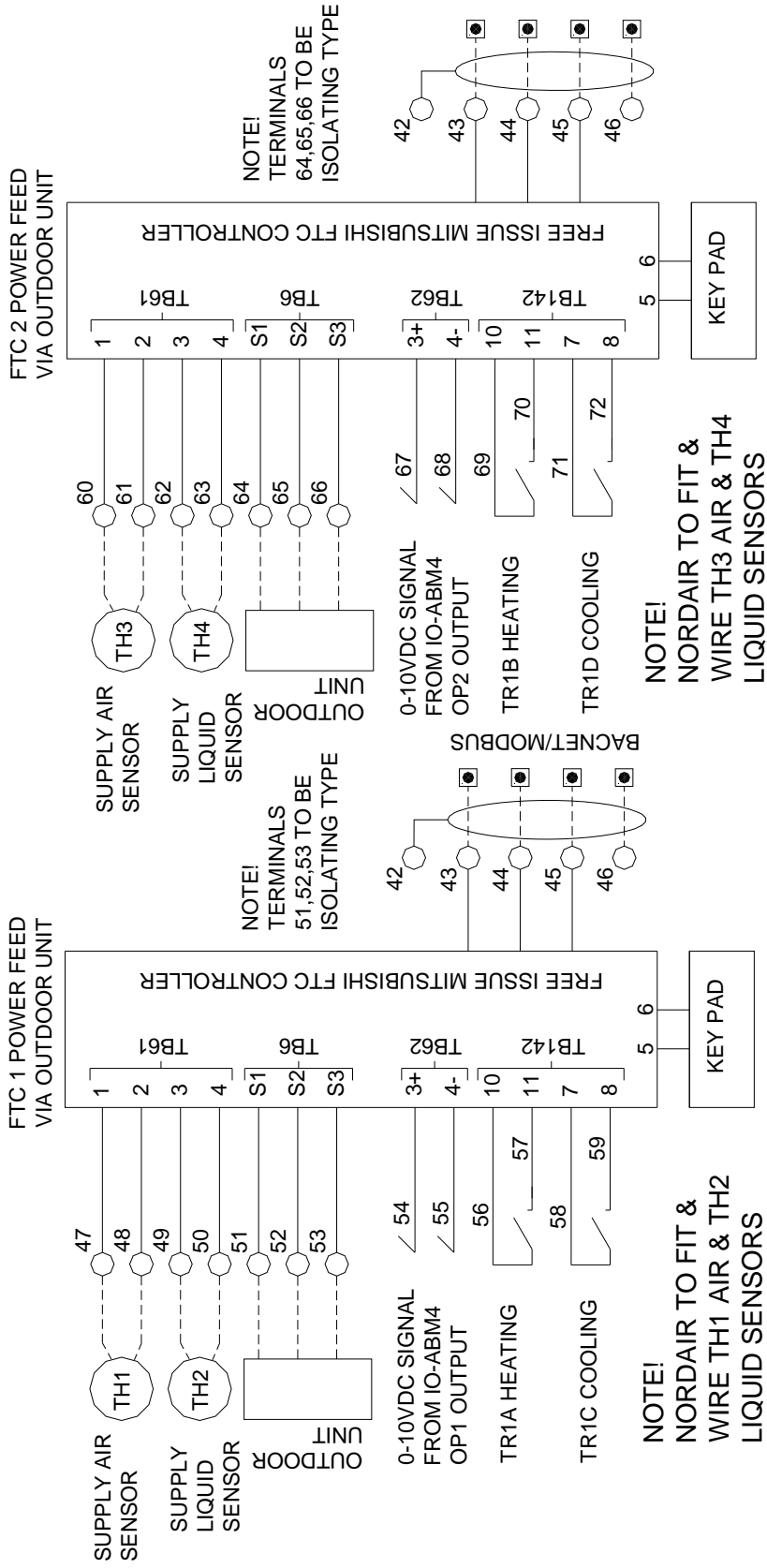
ONLY ON IDF3DX180 (S1/S2)  
IDF4DX200/240 (S1/S2)



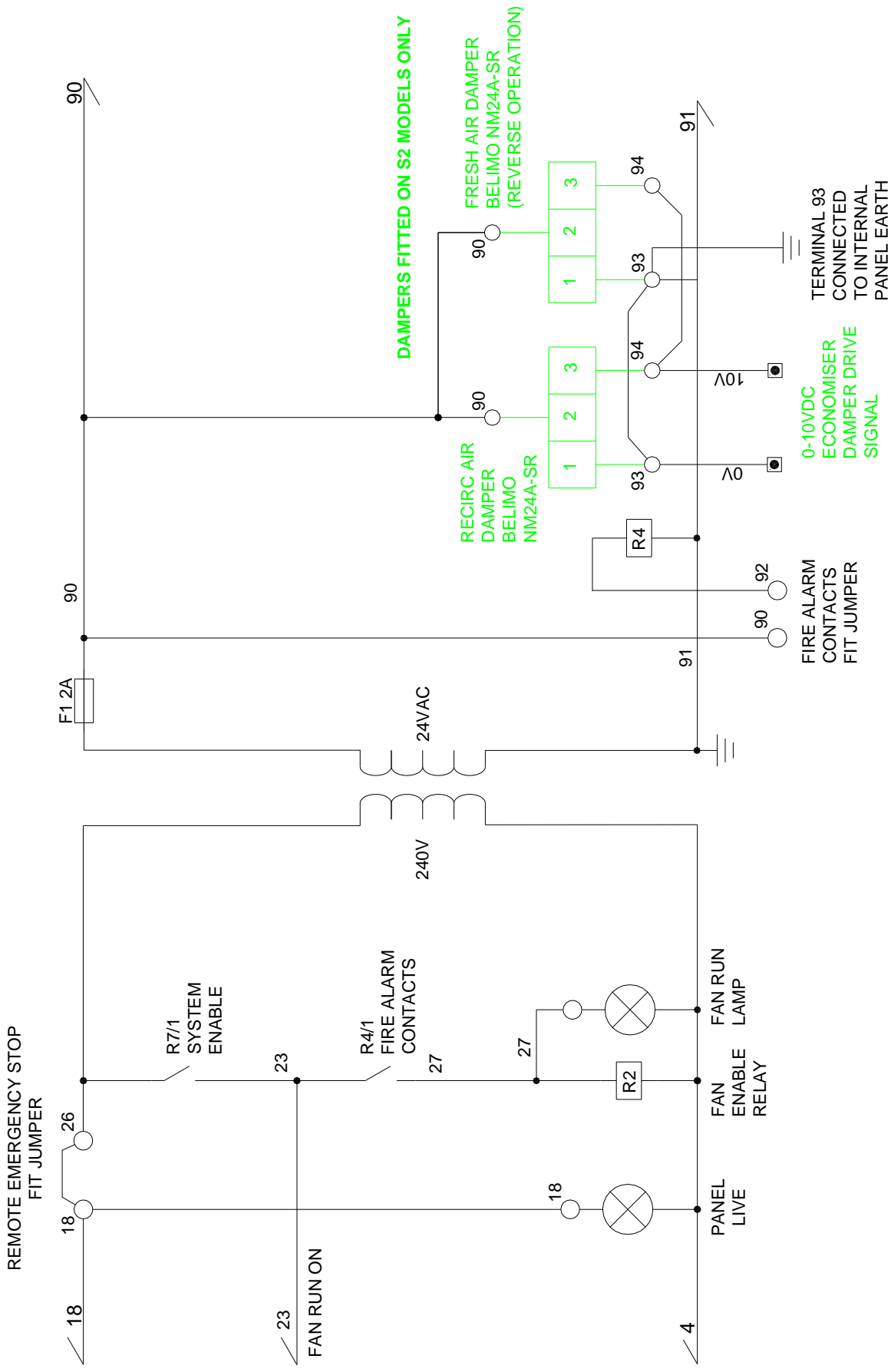
# 1. External Connections (all models)



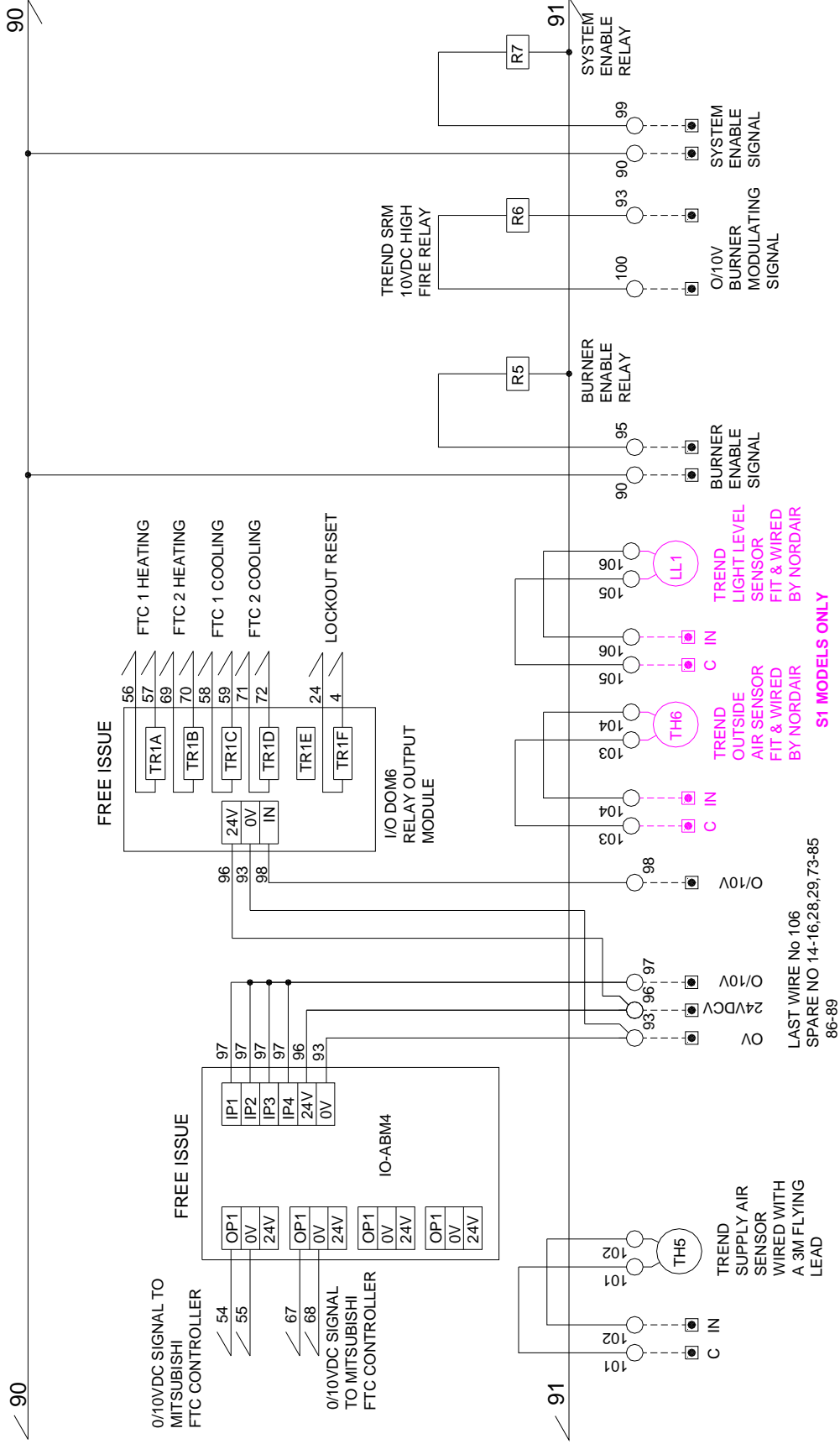
## 2. Mains, Inverter & Heat Exchanger. IDF2 90-150 DX BDX (S1/S2)



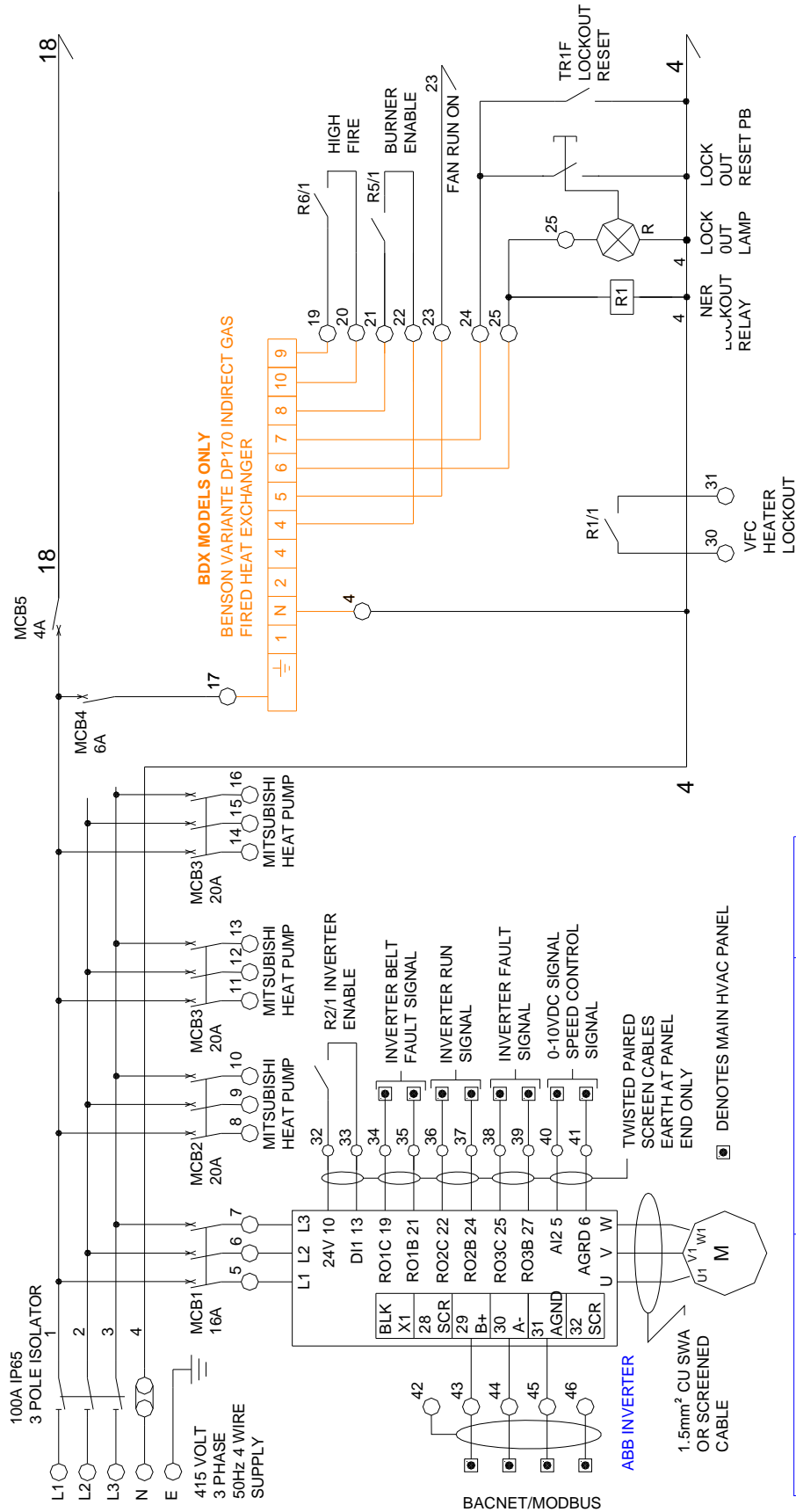
**3. Mitsubishi FTC Controller Wiring. IDF2 90-150 DX BDX (S1/S2)**



## 4. Fan Control & Damper Wiring. IDF2 90-150 DX BDX (S1/S2)



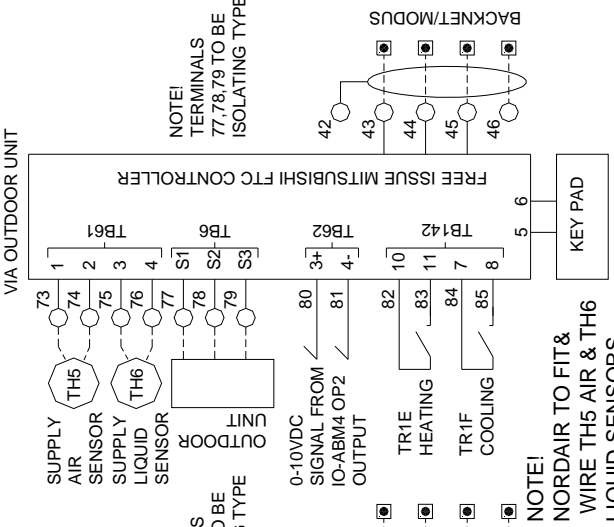
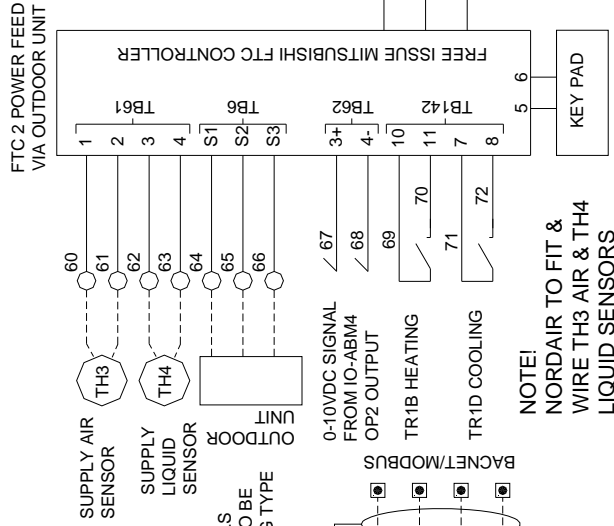
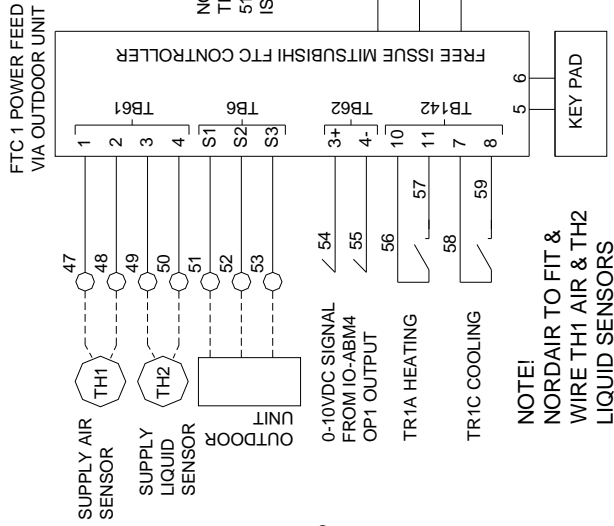
**5. I/O Modules & Sensor Wiring. IDF2 90-150 DX BDX (S1/S2)**



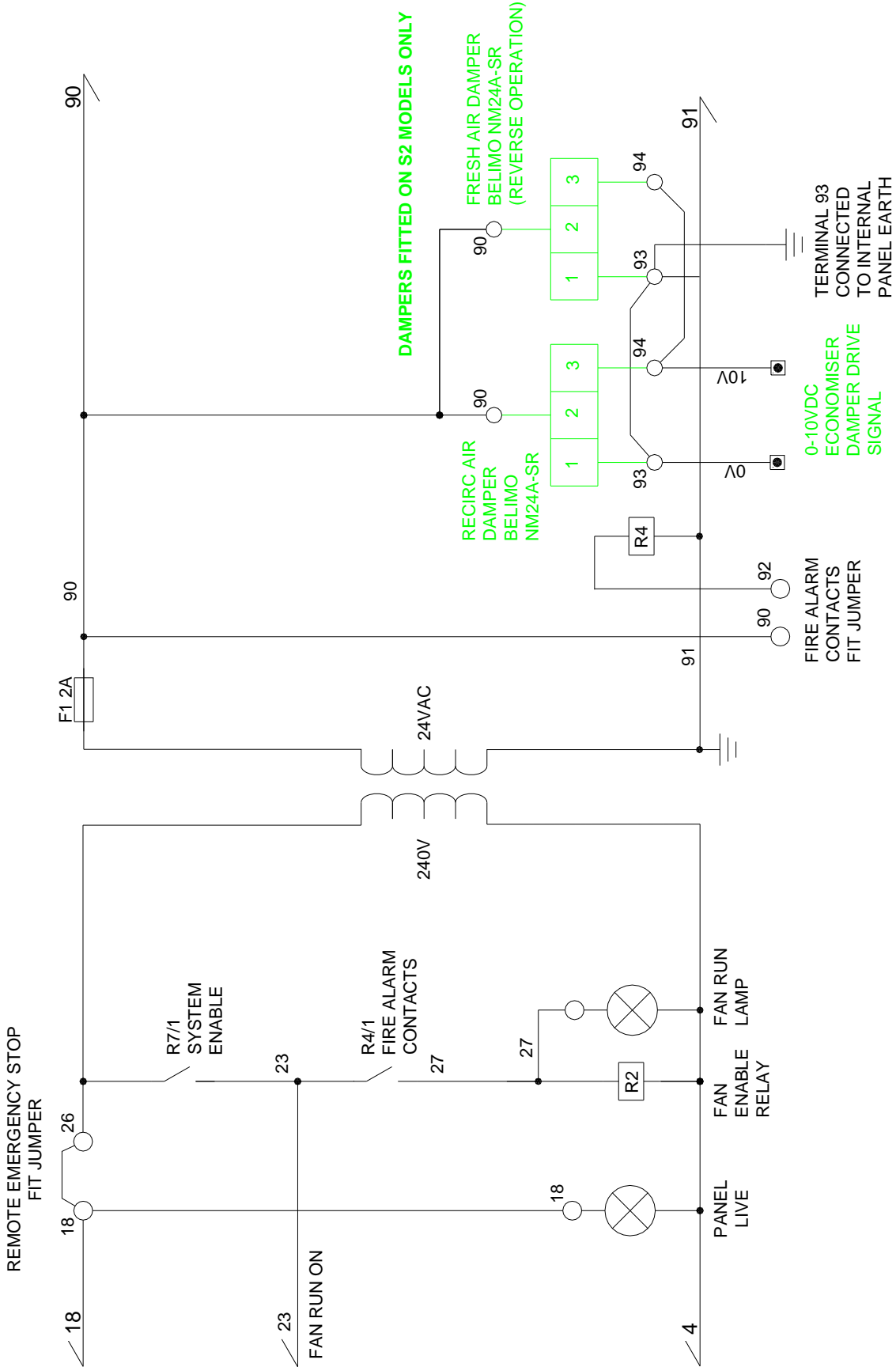
HEATER MODEL	ABB INVERTER TYPE	MOTOR KW
IDF3DX180 (S1/S2)	ACH550-01-08A8-4	4.0
IDF4DX200/240 (S1/S2)	ACH550-01-12A4	5.5
IDF4BDX200/240 (S1/S2)		

## 6. Mains/Inverter & Heat Exchanger Wiring. IDF3180, IDF4200/240 DX, BDX (S1/S2)

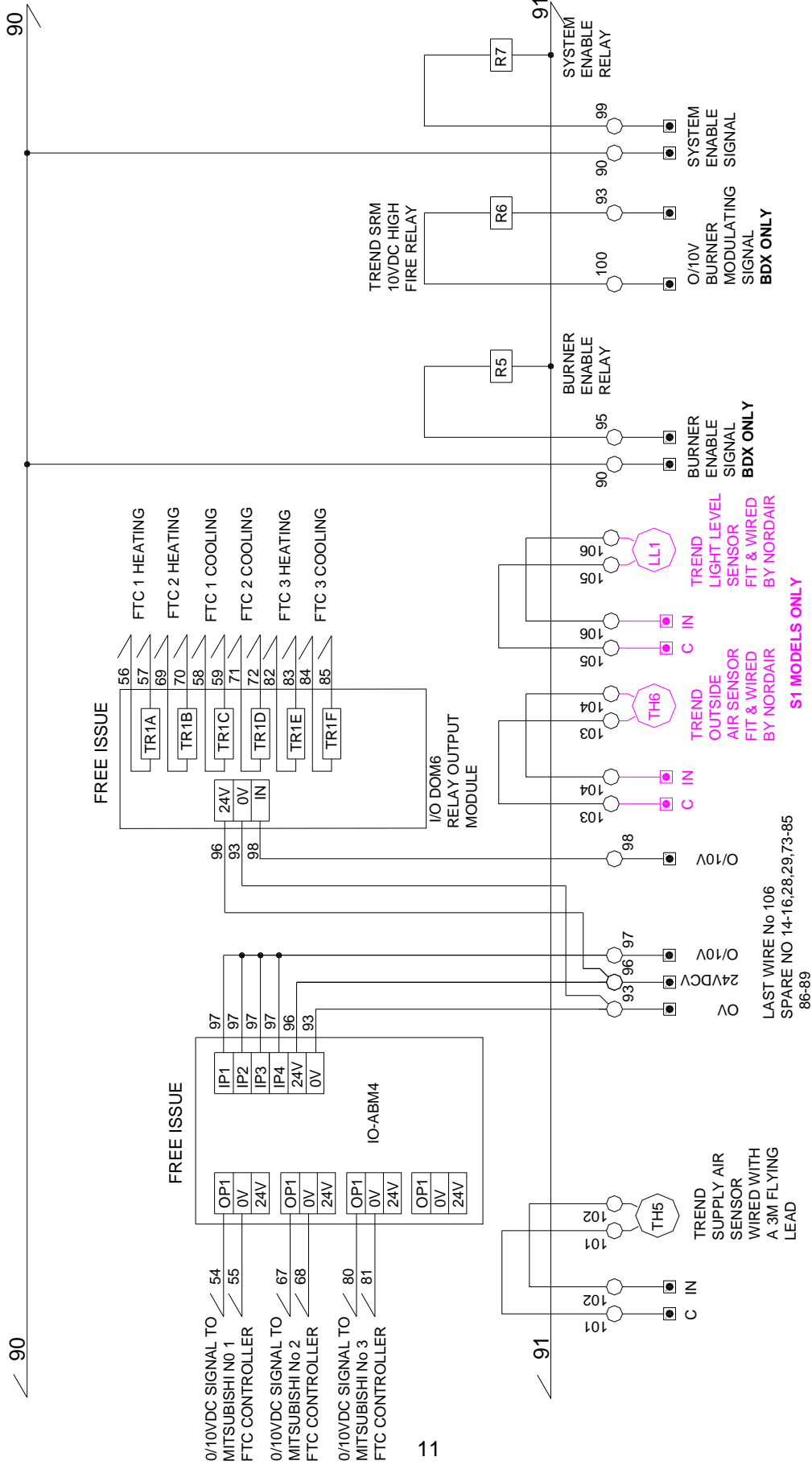




# 7. Mitsubishi FTC Controller Wiring. IDF3180, IDF4200/240 DX, BDX (S1/S2)



**8. Fan Control & Damper Wiring. IDF3180, IDF4200/240 DX, BDX (S1/S2)**



9. I/O Modules & Sensor Wiring. IDF3180, IDF4200/240 DX, BDX (S1/S2)



Northern Office  
6 - 14 Bean Leach Road  
Hazel Grove Stockport Cheshire  
SK7 4LD  
United Kingdom

Tel: 0161 482 7900  
Fax: 0161 482 7901

Email: [sales@nordairniche.co.uk](mailto:sales@nordairniche.co.uk)

Southern Office  
Unit 4 Chilford Court  
Braintree Essex  
CM7 2QS  
United Kingdom

Tel: 01376 332200  
Fax: 01376 332201

Website: [www.nordairniche.co.uk](http://www.nordairniche.co.uk)

 **NORDAIR**  
**NICHE** COMBINED  
HEATING AND  
VENTILATION

Nordair Niche is a registered trademark of AmbiRad Limited.  
Because of continuous product innovation, AmbiRad  
reserves the right to change product specification  
without notice.